



# Portable Electric Air Pumps

Page 1 of 2

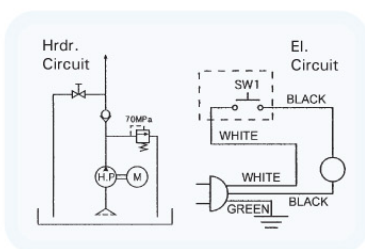
**Model:** ZPE-35 Series

**Max. Operates:** Up to 10,000 psi (70 Mpa)

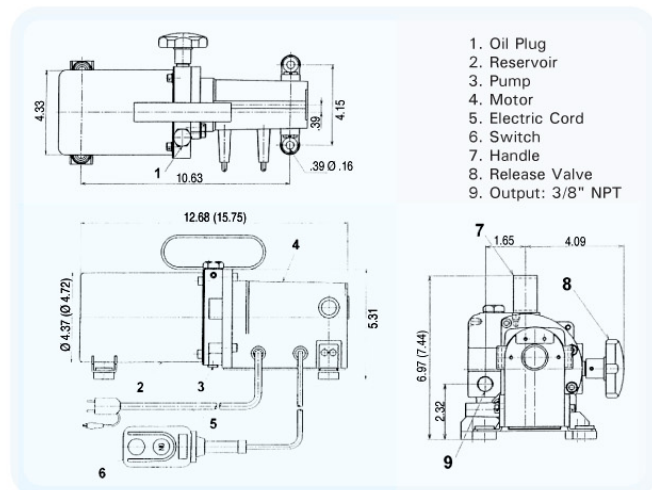
**Power By:** 1/3 HP, 2000 rpm commutator motor.



**Model:**  
ZPE-35RH-1ML



*ZPE-35RH-1ML Circuit and Parts Description*

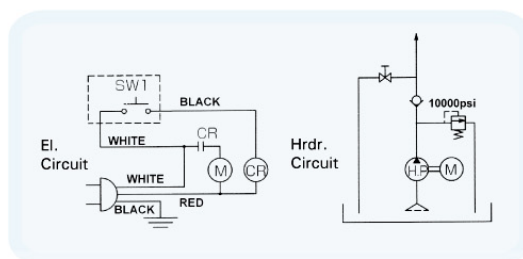


## Usage

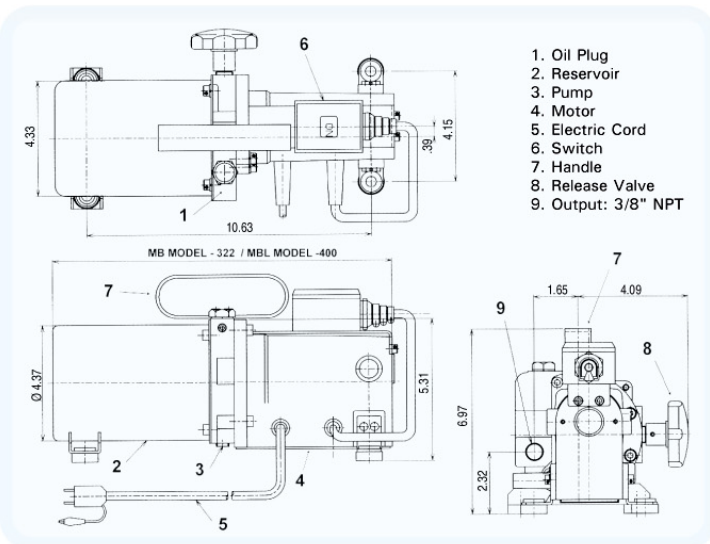
Our ZPE-35 Series electric pumps are designed for a large number of different applications where lifting, pushing, bending, or holding may be required. Ideal for general industry, electric installations, construction industry, ship yards, material handling, etc.

## Special Features

1. All models come equipped with either an easy carry handle or a shoulder strap.
2. Except for model ZPE-35RH-1MB and ZPE-35RH-1MBL which are designed with the control switch attached to pumps, all models have remote pendant switches.
3. Super lightweight and compact for portability. Ideal for use with hydraulic pullers, pipe benders, cable tools and jacks.
4. These pumps are fully sealed, making them ideal for outdoor use, and can operate in any position.
5. Optional battery operated 12V & 24V DC models are available upon request.
6. Optional solenoid and 4-way manual control valves are also available upon request.



*ZPE-35RH-1MBL & ZPE-35RH-1MB Circuit and Parts Description*

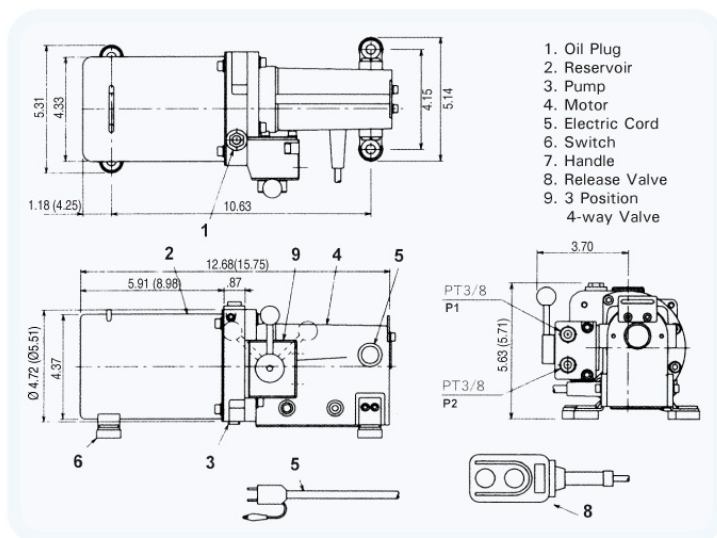
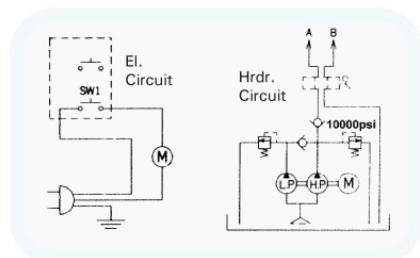


**Model:**  
ZPE-35RH-1MBL

**Model:**  
ZPE-35RH-1MB



Model: ZPE-35RH-4M



Model Number	Motor (50/60Hz)				Performance				Reservoir	
	Type	AC (V)	Output (HP)	Revolution (rpm)	Max. Press (psi)		Output (in³/min.)		Capacity (in³)	Capacity (in³)
					2 <sup>nd</sup> Stage	1 <sup>st</sup> Stage	2 <sup>nd</sup> Stage	1 <sup>st</sup> Stage		
					High	Low	High	Low		
ZPE-35RH-1M	E	110	1/3	2,000	10,000	145	18	37	61	49
ZPE-35RH-1ML	E	110	1/3	2,000	10,000	145	18	37	120	98
ZPE-35RH-1MB	E	110	1/3	2,000	10,000	145	18	37	61	49
ZPE-35RH-1MBL	E	110	1/3	2,000	10,000	145	18	37	120	98

## ZPE-35RH Portable Electric Pump Order Options

For Use With	Model No. ZPE	Reservoir Cap. (in <sup>3</sup> )	Valve		Wt. (lbs)
			Type	Function	
Single Acting Cylinder	ZPE-35RH-1M	60	2 Way Manual	Remote pendant switch provided.	17
	ZPE-35RH-1ML	120	Standard	When pump "ON", close valve to hold load, open valve to return.	18
	ZPE-35RH-1MB	60	2 Way Manual	Switch attached to pump.	17
	ZPE-35RH-1MBL	120	Standard	When pump is "ON", close valve to hold load, open valve to return.	18
	* ZPE-35RH-NC	60	Normally Closed	Pressure hold type:	17
	* ZPE-35RH-NCL	120	2 Way Manual	Valve remains closed during operation.	18
	* ZPE-35RH-NC-D12	60	Solenoid	To be operated by 12V Battery.	17
	* ZPE-35RH-NC-D24	60		To be operated by 24V Battery.	18
	* ZPE-35RH-NO	60	Normally Open	Auto return type:	17
	* ZPE-35RH-NOL	120	2 Way Manual	Valve remains open during operation.	18
Double Acting Cylinder	* ZPE-35RH-IN	60	2 Way Manual Solenoid	Pressure hold type:	17
	* ZPE-35RH-INL	120		Cylinder can be stopped on both advance & return positions.	18
	* ZPE-35RH-IN-D12	60		To be operated by 12V Battery.	17
	* ZPE-35RH-IN-D24	60		To be operated by 24V Battery.	18
	ZPE-35RH-4M	60		Switch control pump "ON" and release for "OFF"	17
	* ZPE-35RH-4ML	120		4 different designed valves available for varies applications. Refer to page 20 for valve details.	18

\* Available upon request.