

Hand Crank / Spring Retractable Welding Cable Reels Series CEA / WC

- Designed to improve safety in the work area with an increase in efficiency and productivity
- Cable reels have a current path through a continuous 400 or 700 AMP, 90 V DC (maximum) rated enclosed slip ring
- Keeps work area and vehicles better organized, resulting in better space utilization
- Stores cable when not in use, eliminating tangled, kinked welding cables
- Welding cable reels store work lead or electrode lead, up to 4/0, safely and effectively when not in use. Each lead requires a separate reel. When welding also refer to ANSI/Asc Z 49.1
- Maintains proper bend radius of cables, providing longer cable life



WC7000



WC80001

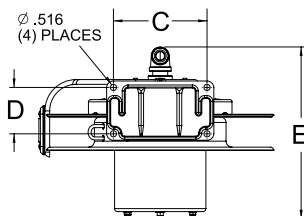
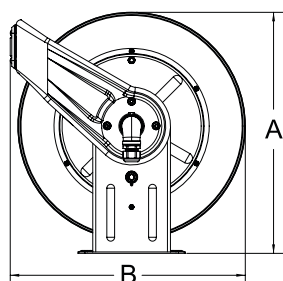


Pivot Bases & Swing Brackets
See page 39



Interactive Reel Catalog

Visit reelcraft.com/catalog for complete product specifications, parts, and accessories.



Size Index

	1		2		3	
	in	mm	in	mm	in	mm
A	20 ¹ / ₄	514	20 ¹ / ₄	514	25 ³ / ₈	645
B	19 ³ / ₄	502	19 ³ / ₄	502	24	610
C	7 ⁷ / ₈	200	7 ⁷ / ₈	200	10	254
D	3 ⁷ / ₈	98	3 ⁷ / ₈	98	6	152
E	13 ¹ / ₄	337	14	356	15 ⁵ / ₈	397

Model without cable & bumper	Cable Size										Amps	Shipping Weight		Size Index #
	#1 (42mm ²)		1/0 (54mm ²)		2/0 (67mm ²)		3/0 (85mm ²)		4/0 (107mm ²)					
	ft	m	ft	m	ft	m	ft	m	ft	m		lbs	kg	
WC7000	50	15	50	15	50	15	-----	-----	-----	-----	400	58	26	1
WCH7000	-----	-----	-----	-----	-----	-----	50	15	50	15	700	58	26	2
WC80001	75	23	75	23	75	23	-----	-----	-----	-----	400	102	46	3
WC80002	100	30	-----	-----	-----	-----	-----	-----	-----	-----	400	104	47	3
WCH80001	-----	-----	-----	-----	-----	-----	75	23	75	23	700	102	46	3
*May exceed maximum cable length allowable for most welding applications. NOTE: Each cable requires separate reel.														
**Hand crank reel														

*May exceed maximum cable length allowable for most welding applications. **NOTE:** Each cable requires separate reel.
**Hand crank reel

Caution: If cable reels are to be used for extended periods of time, unwind all cable from reel to prevent heat build-up. **For indoor non-weathertight applications only.**

Cable Size	Bumper
#1	1-HR1004-3A
1/0, 2/0, 3/0	1-HR1004-3
4/0	2-HR1004-3