

QUICKJACK™

NEW
6K & 8K lb.
Capacity



THE ULTIMATE PORTABLE CAR LIFT

1-888-262-3880 • www.quickjack.com

OVERVIEW

QuickJack portable lifting system makes vehicle maintenance on and off the track convenient and lightning fast. QuickJack is compact enough to fit in the trunk or back seat of most vehicles, making it easy to take anywhere. Bring it to the track, or drop it on your garage floor to perform routine maintenance in the comfort of your home, all in seconds.

QuickJack lifts and secures your vehicle with just the push of a button—no crossbeams to get in your way. Each of the two frames feature automatic locking bars that are essentially “jack stands” built right into the sides.



When we talk about QuickJack as a portable car lift, we compare it to car jacks and jack stands to show just how big of an upgrade it really is. That said, it's not a replacement for jack stands. Always use auxiliary safety stands when working underneath. QuickJack also isn't designed to replace two-post or four-post lifts. If you've got the space and want something permanent, go that route. But if flexibility matters, whether it's your garage, driveway, or pit space, QuickJack gives you serious lift power without locking you down.

WHAT'S INCLUDED?

- A** Right frame assembly
- B** Left frame assembly
- C** 1x Electric/Hydraulic Power Unit*
- D** Includes hand-pendant control
- E** 4x Medium rubber lift blocks (2")
- F** 4x Tall rubber lift blocks (3")
- G** Pre-installed fittings and hoses
- H** 2x Frame-positioning handles
- I** Instruction manual



*Hydraulic fluid is not supplied.

FEATURES

AUTOMATIC SAFETY LOCKS

Features dual-position automatic safety locks on each TL and TLX frame. As the frames rise, these locks glide securely into place at mid-rise and full-rise. Simply raise your QuickJack past the lock blocks, disengage the lock bar with a simple flip, and your vehicle is now ready for a smooth descent.



INCREASED LIFTING CAPACITY

QuickJack TL models now lift more than ever. The upgraded 6000TL and 8000TL raise up to 6,000 lbs. and 8,000 lbs., respectively—1,000 lbs. more than their predecessors. Extended versions, 6000TLX and 8000TLX, offer the same capacity with extra length for longer wheelbases.

UNDERCARRIAGE ACCESS

Unlike ramps or traditional jack stands that obstruct critical areas, the open center design of QuickJack provides unparalleled access to the entire underside of your vehicle. Mechanics and DIY enthusiasts can easily perform tasks like exhaust work, suspension upgrades, brake jobs, and fluid changes without having to twist or maneuver around bulky supports.



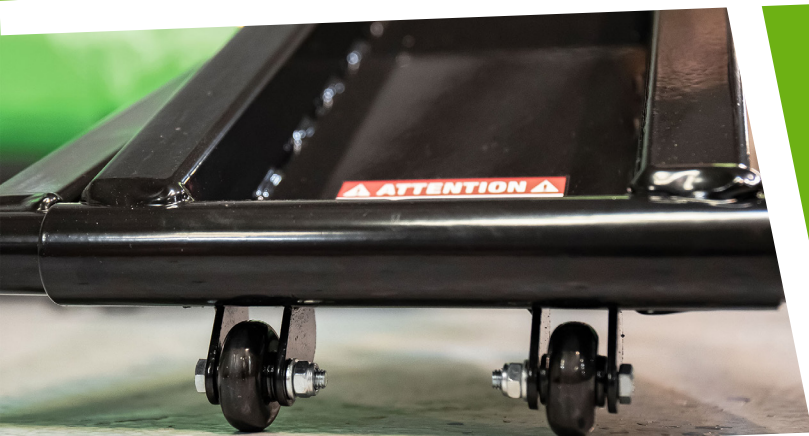
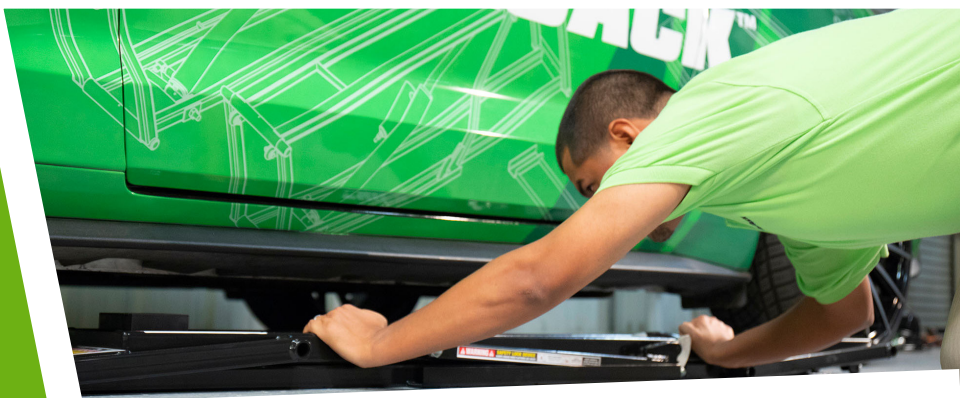
ONE-HANDED OPERATION

By holding the pendant control in one hand, your other hand is totally free. This eliminates the need for awkward cranking or repetitive bending, streamlining lifts while reducing strain on your back and joints, making it a convenient and efficient tool for any automotive enthusiast.

FEATURES

FAST AND EASY SET-UP

QuickJack boasts an incredibly fast and easy setup, making it a favorite among DIYers and professionals alike. After assembly, with minor adjustments for perfect vehicle lifting point alignment, and a simple press of a button, your car is lifted safely and securely in minutes.



PORTABLE

QuickJack's most compelling feature is undoubtedly its portability. Unlike traditional shop lifts that are bolted to the floor, QuickJack is designed to be easily moved and stored. Its lightweight frames and detachable hydraulic power unit allow you to quickly set it up in your garage, driveway, or even take it to the track. When not in use, QuickJack folds into a compact form factor, taking up minimal space.

STACKABLE RUBBER BLOCKS

Each QuickJack comes standard with two sets of stackable rubber blocks, providing a secure fit for a variety of vehicle lift points. These rubber blocks are designed to accommodate a wide range of vehicle lift points. Optional pinch-weld blocks are also available.



ALI CERTIFIED

QuickJack 6000 and 8000 models are certified by the Automotive Lift Institute (ALI), ensuring they meet the industry's highest safety and performance standards. This certification involves rigorous testing to verify structural integrity, mechanical reliability, and adherence to safety protocols. The ALI Gold Label on QuickJack products signifies compliance with ANSI/ALI ALCTV standards, providing users with confidence in the lift's quality and safety.



**INDEPENDENTLY TESTED
AND CERTIFIED BY THE
AUTOMOTIVE LIFT INSTITUTE**

SPECIFICATIONS

NEW

3500SLX

6000TL

6000TLX

8000TL

8000TLX

6000ELX

Lifting Capacity	3,500 lbs. (1,588 kg)	6,000 lbs. (2,722 kg)	6,000 lbs. (2,722 kg)	8,000 lbs. (3,629 kg)	8,000 lbs. (3,629 kg)	6,000 lbs. (2,722 kg)
Lowered Height	3" (76 mm)	2.75" (76 mm)	2.75" (76 mm)	3.5" (89 mm)	3.5" (89 mm)	3.5" (89 mm)
Lifting Height (stacked blocks)	21" (533 mm)	24" (610 mm)	24" (610 mm)	24.5" (622 mm)	24.5" (622 mm)	24.5" (622 mm)
Lift Point Spread (min.)	27" (686 mm)	37" (940 mm)	43" (1,092 mm)	37" (940 mm)	43" (1,092 mm)	53" (1,346 mm)
Lift Point Spread (max.)	50.5" (1,283 mm)	60.18" (1,524 mm)	66" (1,676 mm)	60" (1,524 mm)	66" (1,676 mm)	76" (1,930 mm)
Frame Width	10.5" (267 mm)	11" (279 mm)	11" (279 mm)	12.5" (318 mm)	12.5" (318 mm)	12.5" (318 mm)
Frame Length	62.5" (1,588 mm)	70.5" (1,778 mm)	76" (1,930 mm)	70.75" (1,797 mm)	76" (1,930 mm)	86.75" (2,203 mm)
Frame Weight	60 lbs. (27 kg)	79 lbs. (35 kg)	81 lbs. (37 kg)	100 lbs. (45 kg)	103 lbs. (47 kg)	112 lbs. (51 kg)

3500SLX Light-Duty

SKU# 5175010



3,500 lb.
Capacity

6000TL Most Popular Model

SKU# 5175626



6,000 lb.
Capacity

8000TL Ideal for Truck & SUVs

SKU# 5175654



8,000 lb.
Capacity

6000ELX Extra-Long Wheelbases (Electric Vehicles)

SKU# 5175650



6,000 lb.
Capacity

6000TLX Extended Frame Length

SKU# 5175629



6,000 lb.
Capacity

8000TLX Extended Frame Length

SKU# 5175673



8,000 lb.
Capacity

QUICK-JACK™

FASTER • SMARTER • SAFER



1-888-262-3880 • www.quickjack.com

OPTIONAL ACCESSORIES

Wall Hanger Set

SKU# 5210199

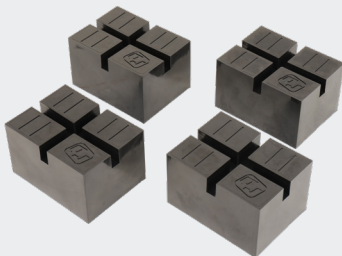
- Sold in sets of 2
- Solid-steel construction
- 150% rated capacity



Pinch-Weld Blocks

SKU# 5300013

- Sold in sets of 4
- Specially formulated urethane rubber
- Water/Chemical resistant and 100% weatherproof



Pinch-Weld Pucks

SKU# 5300011

- Sold in sets of 4
- Specially formulated urethane rubber
- Round puck pad secures difficult pinch-weld rails without risk of damage



ATV / Motorcycle Lift Adapter Kit

SKU# 5150006

- Aluminum diamond tread plate
- Heavy-duty tie-down rings
- Adjustable wheel clamp



SUV & Light Truck Adapter Kit

SKU# 5150561

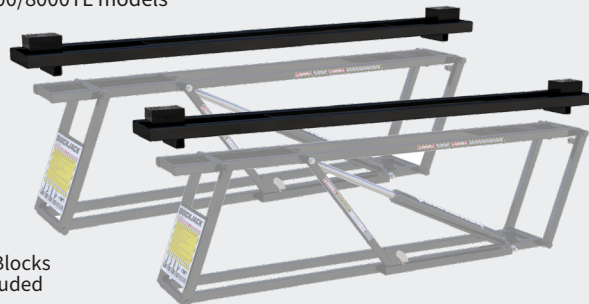
- Sold in sets of 4
- Contact pads
- Sliding receivers
- 3" Stackable adapters



Frame Extension Kit

SKU# 5620291

- Sold in sets of 2
- Frame extension adapters with 66" lift point spread each
- Rugged 14-gauge steel construction
- Fits 6000/8000TL models

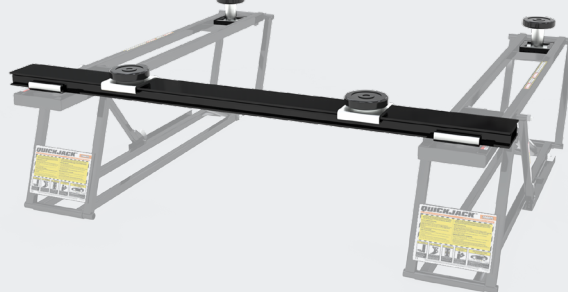


Rubber Blocks
NOT included

Crossbeam Adapter

SKU# 5215865

- Adjustable lifting pads
- Additional 4.75" clearance height
- Comes with custom contact pads



Motorcycle Adapter Kit

SKU# 5150007

- Aluminum diamond tread plate
- Heavy-duty tie-down rings
- Adjustable wheel clamp



Ranger RML-1100
Motorcycle Jack
sold separately

PHOTO GALLERY





QUICKJACK™

THE ULTIMATE PORTABLE CAR LIFT

1-888-262-3880 • www.quickjack.com