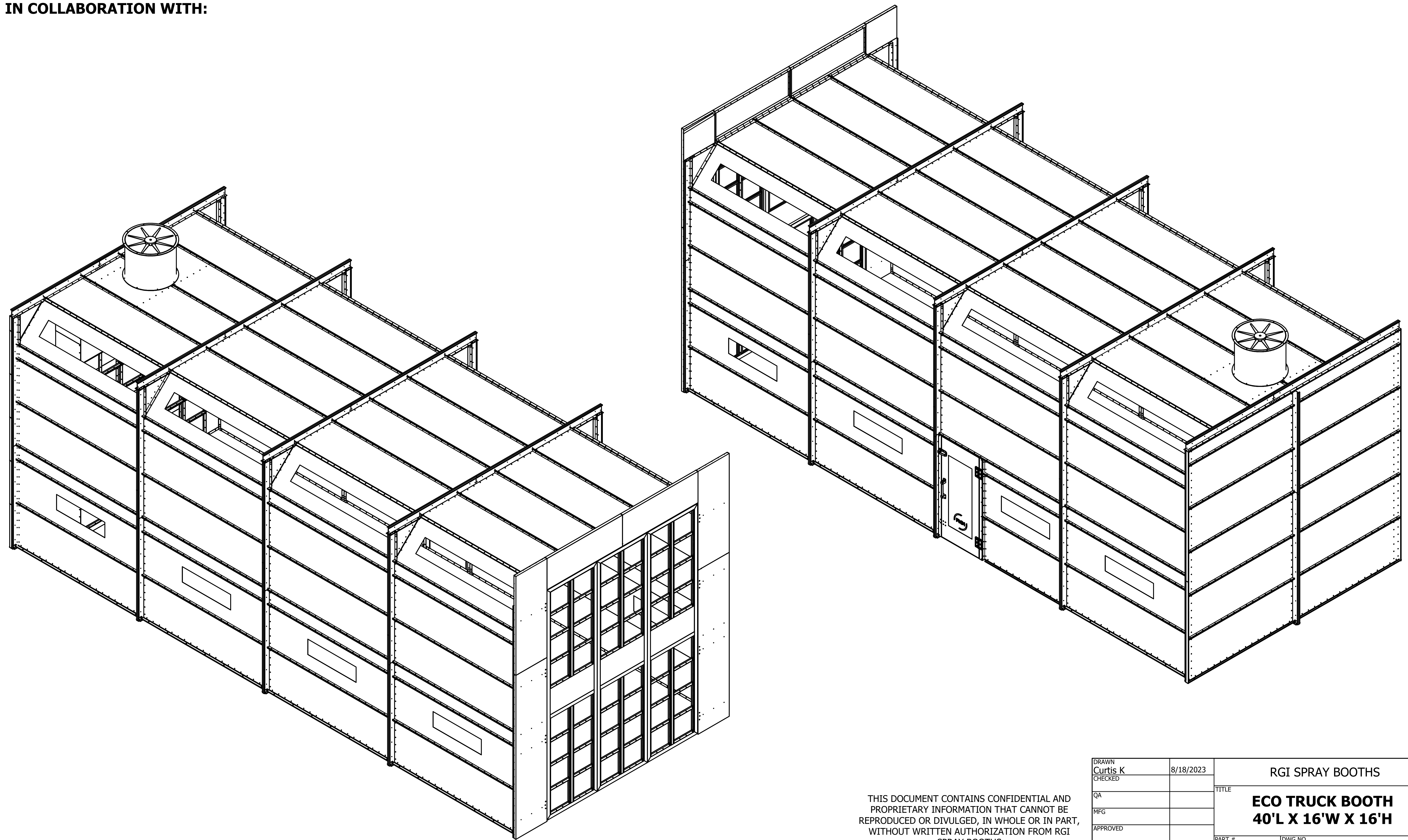
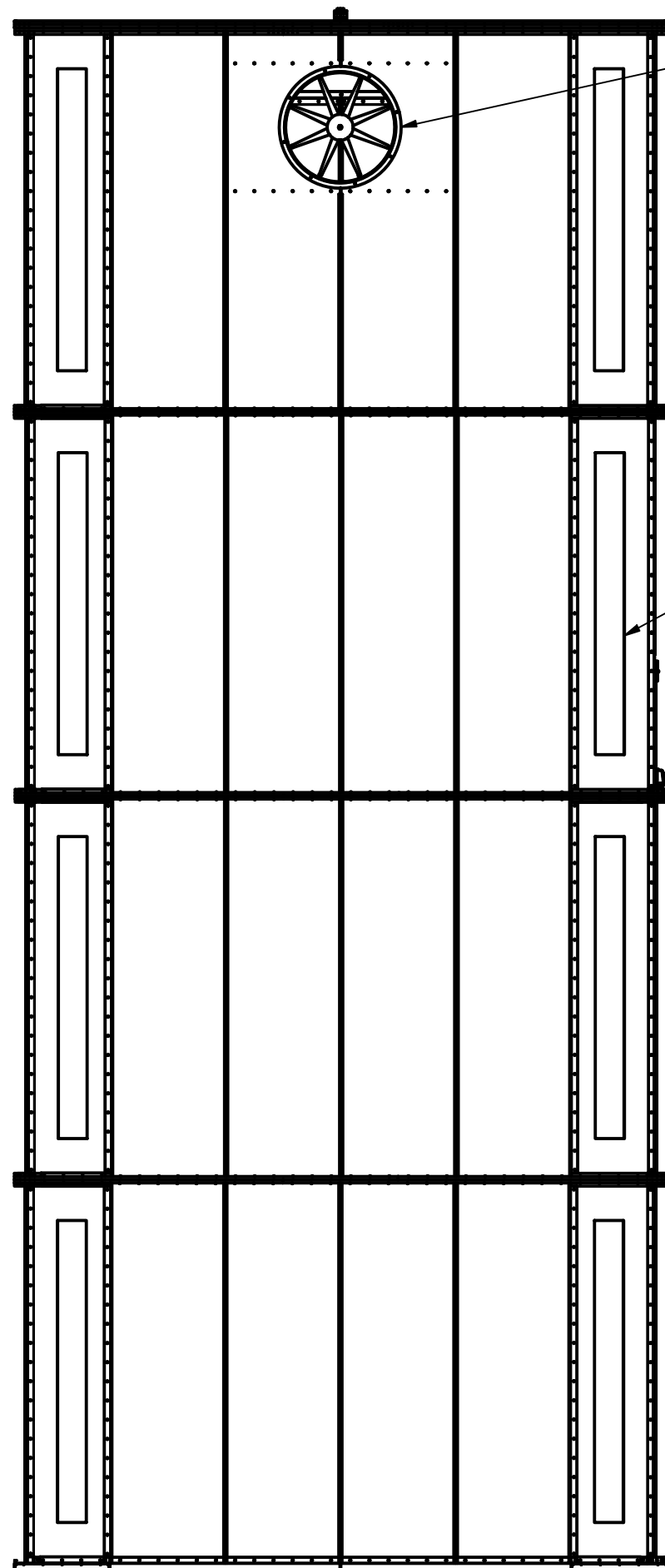
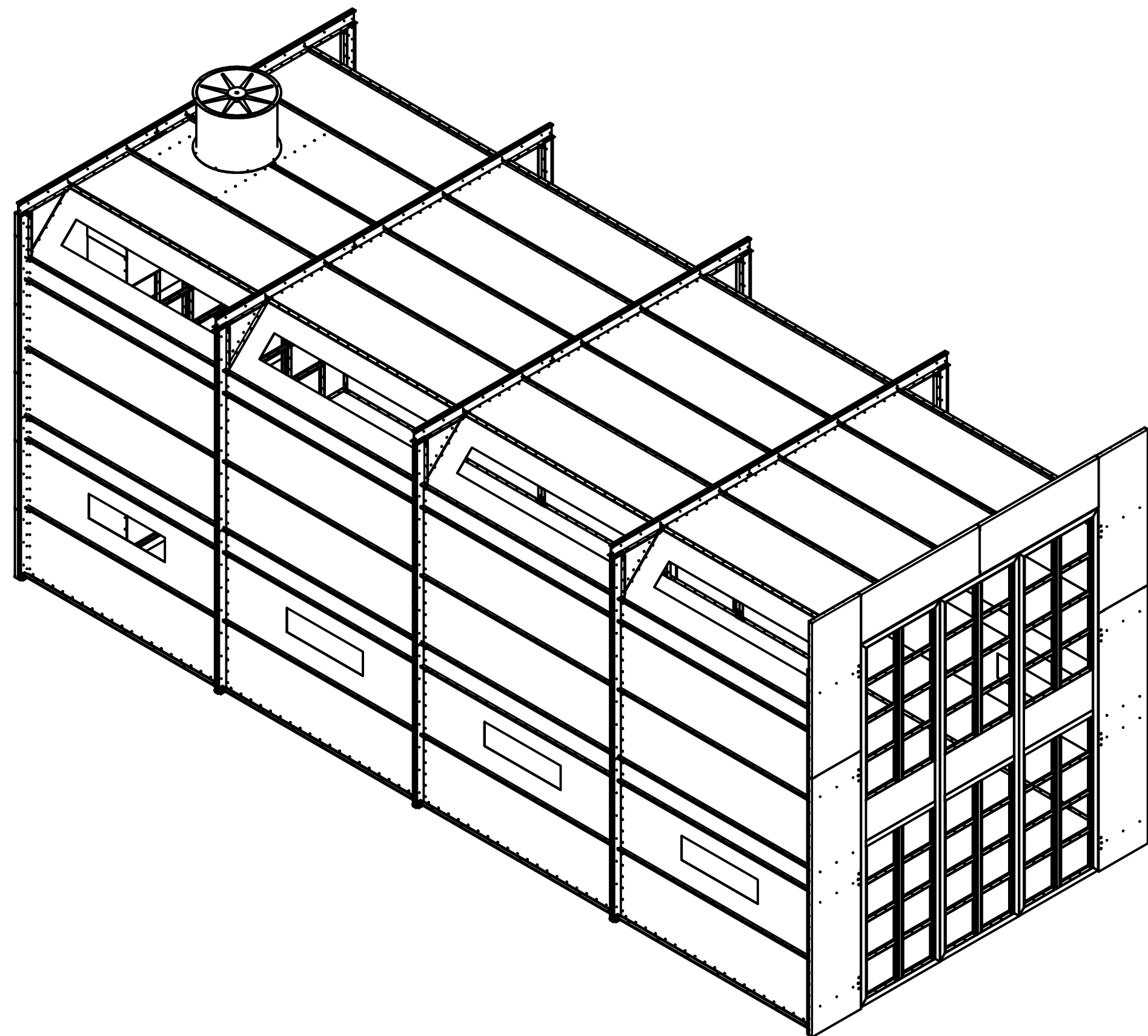


IN COLLABORATION WITH:



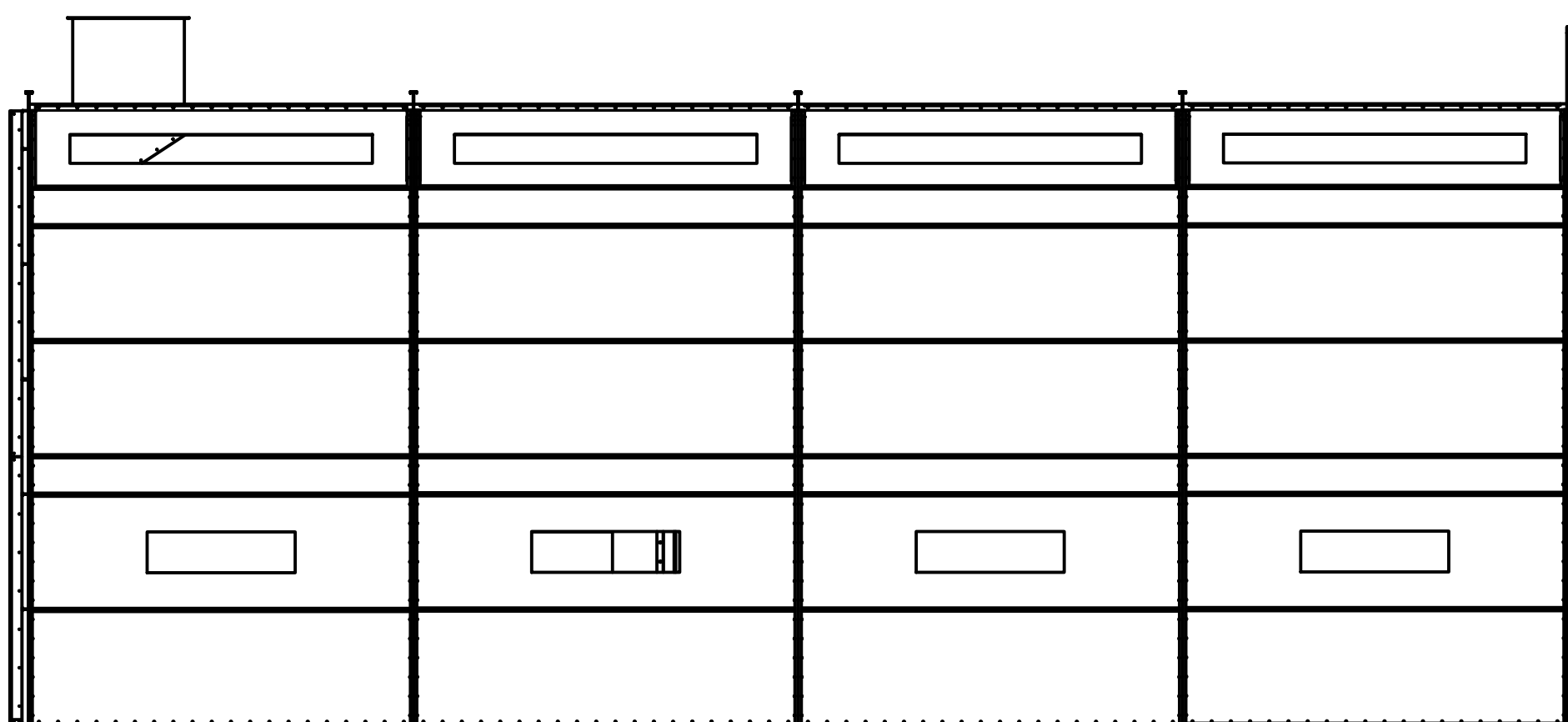
THIS DOCUMENT CONTAINS CONFIDENTIAL AND  
PROPRIETARY INFORMATION THAT CANNOT BE  
REPRODUCED OR DIVULGED, IN WHOLE OR IN PART,  
WITHOUT WRITTEN AUTHORIZATION FROM RGI  
SPRAY BOOTHS

DRAWN Curtis K	8/18/2023	RGI SPRAY BOOTHS		
CHECKED		TITLE		
QA		<b>ECO TRUCK BOOTH 40'L X 16'W X 16'H</b>		
MFG		PART #	DWG NO	REV
APPROVED		ECO TRUCK BOOTH 40'L X 16'W X 16'H		
		SCALE 1 / 30	SHEET 1 OF 2	



34" TUBE AXIAL FAN

(8) 8' LED LIGHTS

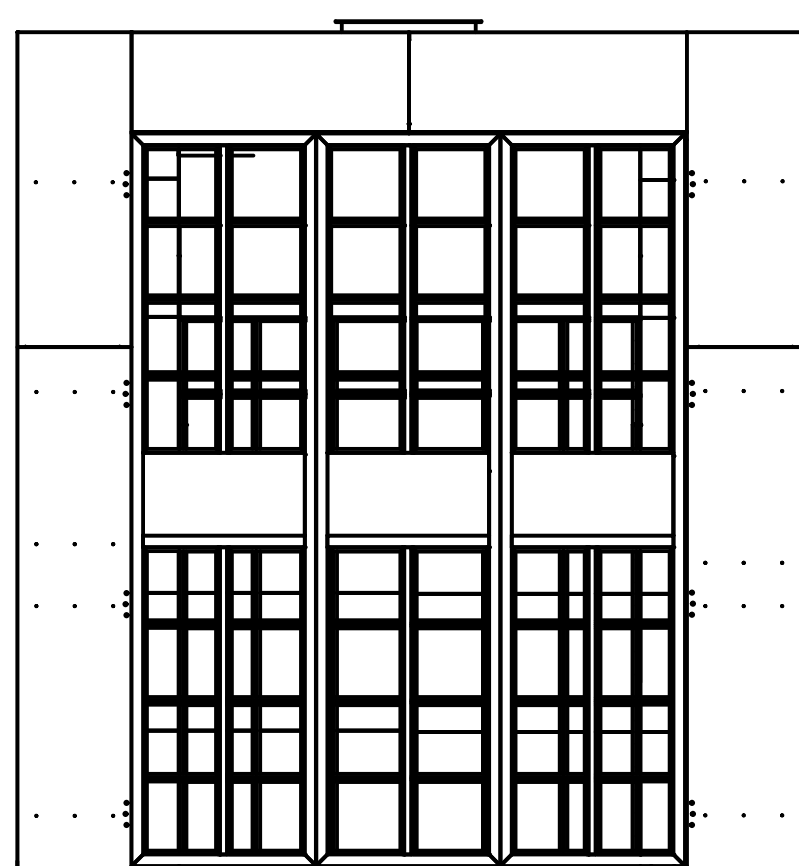


16'-0"  
INSIDE

38'-0"  
FILTER TO FRONT

40'-0"  
INSIDE

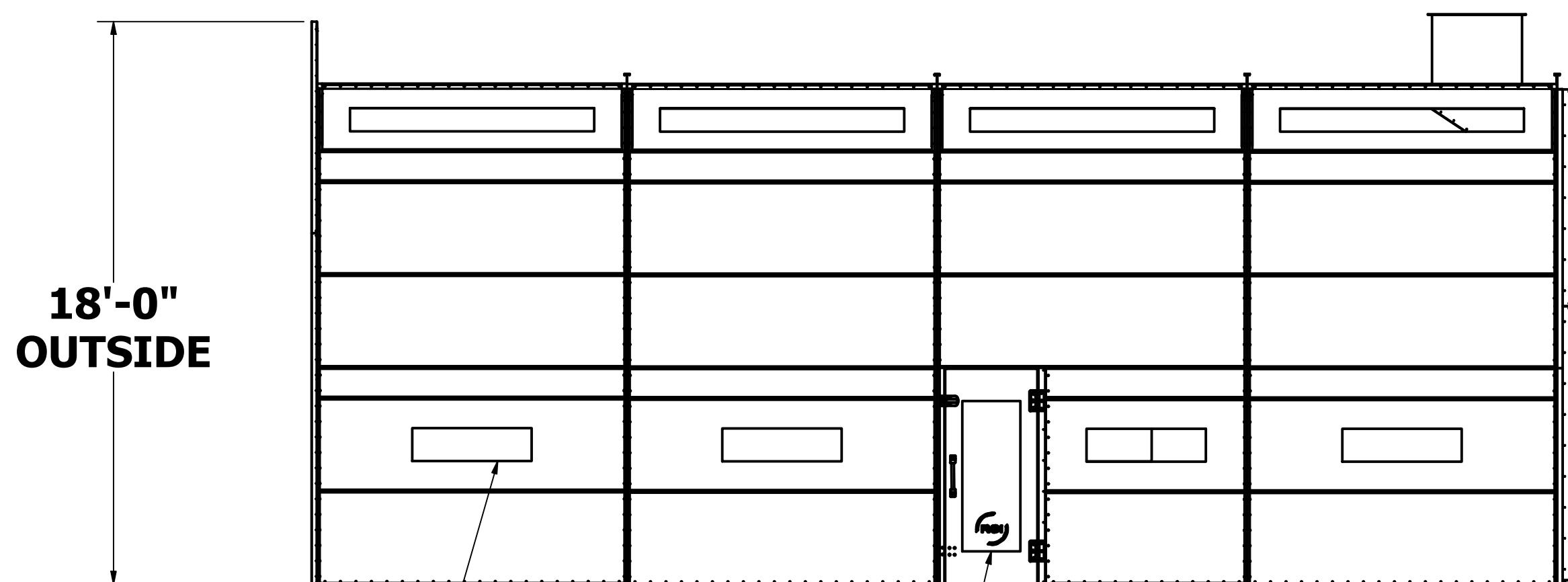
40'-8 1/2"  
OUTSIDE



12'- 1/2"  
DOORWAY

16'-0"  
INSIDE

17'-0"  
OUTSIDE



18'-0"  
OUTSIDE

(8) 4' LED LIGHTS

MAN DOOR 84" X 36"

DRAWN Curtis K	8/18/2023	RGI SPRAY BOOTHS	
CHECKED		TITLE	
QA		ECO TRUCK BOOTH	
MFG		40'L X 16'W X 16'H	
APPROVED		PART #	DWG NO
		ECO TRUCK BOOTH 40'L X 16'W X 16'H	
		SCALE 1 / 50	SHEET 2 OF 2