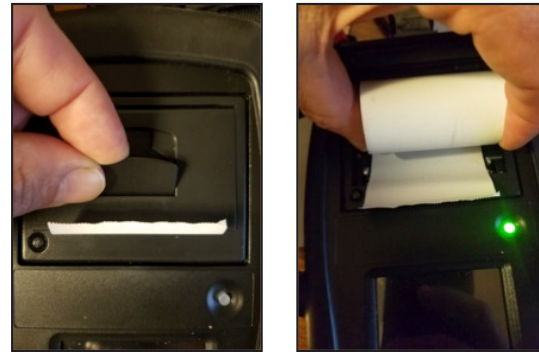


For the BVA-360P version equipped with the printer.

To access, or change the printer paper, lift up on the release latch in the middle of the printer door to open. Remove any leftover paper, then drop in a new roll with the end of the paper coming out from under the roll, toward the bottom of the tester. With a little paper sticking out through the paper slot in the door, you can gently push the door closed until it clicks. Order replacement paper, AutoMeter AC-127 (24 per pack).



Replacement Parts:

AC-31 - Adapter for Group 31 Batteries
AC-74 - Side Terminal Adapter
AC-122 - Optional Charging Dock
AC-124 - Replacement Lead Set
AC-127 - Replacement Thermal Paper - 24 pack
AC-140 - Replacement Wall Outlet Charger
R3-D - Battery Reset Adapter

**See Owners Manual for additional instructions & features.*

For any Questions or Service,
Service (815) 899-0801
Toll Free (866) 883-TEST (8378)



BVA-360/360P Professional Hand-Held Battery & Electrical System Analyzer



WARNING!

This device is only to be used on 12V electrical systems. Not for use on high voltage electrical systems

- Checks 6 & 12 volt batteries.
- Performs starting and charging test on 12V systems.
- Unit is rechargeable: Includes charging & storage dock.
- The BVA-360P has a built in printer, for printing test results for the customer.
- Built in infrared battery thermometer (just aim the back of the tester at the battery during a test).



Printer and Printer Paper Compartment (BVA-360P version only)

Battery Test Only
Starting Test Only
Charging Test Only

Displays Tester Info and Settings

Displays Store Info

Power Button/Power Indicator

Includes Battery, Starting, and Charging System Tests

Other Tests Includes New Battery Reset & Voltmeter

Flash Light



To Power On: Push & hold the power button for 1 second.

To Put to Sleep: Push and hold the power button for about 2 seconds. The word “Sleep” will flash once on the screen, then you can let go of the button. To Wake the tester, push and release the power button

To Power Off: Push & hold the power button for about 5 seconds. The words “Power Off” will flash once on the screen, then you can let go of the button.

To Perform a Test: Choose Full System Test to test a Battery, Starting, and Charging System on a vehicle.
Choose Battery Test to perform a Battery-Only Test, in or out of the vehicle.
Simply follow the prompts after each selection. See the first two screen examples below for a Battery Test. You may also choose Starting Test or Charging Test for an individual starting or charging test.

The tester clamps must be connected to corrosion free, and clean, lead or brass battery terminals, or post adapters securely tightened onto the battery terminal. **DO NOT CONNECT THE BATTERY CLAMPS TO THREADED STEEL BATTERY STUDS.** Failure to follow this instruction may affect the test results.
Adapters for group 31 batteries are included with this tester.

BVA-360P

Full System Test

Battery Test

Starting Test

Charging Test

Other Tests

Review Results

⚙️

ℹ️

🔦

BATTERY TEST

Select Battery Rating

300 CCA

--- RC

Select Battery Type

Standard/Flooded

Clamp Voltage 0.00V

Battery Temp 76 F

Start Battery Test

🔦

🏠

BATTERY TEST RESULT

GOOD BATTERY

Test : #54

Type : Standard/Flooded

Rated CCA : 800

Measured CCA : 825

Measured Voltage : 12.42V

State of Charge (SoC) : 74%

State of Health (SoH) : 100%

Reserve Capacity : OK

Next Steps:
Run Starter and Charging Tests.
Check Cables, Connections,
and Battery Rating Meets
OEM Specifications.

Print Result

<

START ENGINE

❌

STARTING TEST RESULT

GOOD STARTING SYSTEM

Test : #55

Beginning Voltage : 12.31V

Min Cranking Volts : PASS

12.00V

Cranking Current : PASS

Cranking RPM : PASS

222 RPM

Number of Cylinders : 6

Print Result

<

CHARGING TEST RESULT

GOOD CHARGING SYSTEM

Test : #56

Voltage Regulation : PASS

14.14V

Diodes : PASS

7.50mV

Charging Current : PASS

Print Result

<

SYSTEM TEST RESULTS

GOOD BATTERY >

GOOD STARTING SYSTEM >

GOOD CHARGING SYSTEM >

Print Result

<

- At the end of any Test you have the option to print the test results. (with the BVA-360P version)
- To Review Previous Tests: Simply touch the Review Results button on the home page. This tester will store up to 1,000 tests. You may print any existing test results (with the BVA-360P version) from the Review Results page.



The BVA-360 should be plugged in when not in use.



Shown with Optional AC-122 Charging Dock.