



# OPERATOR'S MANUAL



## HYDRAULIC LIFT CART MODEL: B-CART AND B-CARTX2

Baileigh Industrial, Inc.  
P.O. Box 531  
Manitowoc, WI 54221-0531  
Phone: 920.684.4990  
Fax: 920.684.3944  
[sales@baileigh.com](mailto:sales@baileigh.com)

REPRODUCTION OF THIS MANUAL IN ANY FORM WITHOUT WRITTEN APPROVAL OF BAILEIGH INDUSTRIAL, INC. IS PROHIBITED. Baileigh Industrial, Inc. does not assume and hereby disclaims any liability for any damage or loss caused by an omission or error in this Operator's Manual, resulting from accident, negligence, or other occurrence.

Rev. 03/2017

© 2017 Baileigh Industrial, Inc.



## Table of Contents

THANK YOU & WARRANTY .....	1
INTRODUCTION.....	3
GENERAL NOTES.....	3
SAFETY INSTRUCTIONS .....	4
SAFETY PRECAUTIONS .....	6
Dear Valued Customer:.....	6
TECHNICAL SPECIFICATIONS.....	8
B-CART .....	8
B-CARTX2.....	8
TECHNICAL SUPPORT .....	8
UNPACKING AND CHECKING CONTENTS.....	9
Cleaning .....	9
INSTALLATION.....	10
ASSEMBLY AND SET UP .....	11
OPERATION.....	11
LUBRICATION AND MAINTENANCE .....	12
Hydraulic Oil / System .....	12
B-CART PARTS DIAGRAM .....	13
B-Cart Parts List .....	14
B-CARTX2 PARTS DIAGRAM.....	16
B-CartX2 Parts List.....	17
CYLINDER AND PUMP PARTS DIAGRAM .....	19
Cylinder And Pump Parts List.....	20



## THANK YOU & WARRANTY

Thank you for your purchase of a machine from Baileigh Industrial. We hope that you find it productive and useful to you for a long time to come.

**Inspection & Acceptance.** Buyer shall inspect all Goods within ten (10) days after receipt thereof. Buyer's payment shall constitute final acceptance of the Goods and shall act as a waiver of the Buyer's rights to inspect or reject the goods unless otherwise agreed. If Buyer rejects any merchandise, Buyer must first obtain a Returned Goods Authorization ("RGA") number before returning any goods to Seller. Goods returned without a RGA will be refused. Seller will not be responsible for any freight costs, damages to goods, or any other costs or liabilities pertaining to goods returned without a RGA. Seller shall have the right to substitute a conforming tender. Buyer will be responsible for all freight costs to and from Buyer and repackaging costs, if any, if Buyer refuses to accept shipment. If Goods are returned in unsalable condition, Buyer shall be responsible for full value of the Goods. Buyer may not return any special-order Goods. Any Goods returned hereunder shall be subject to a restocking fee equal to 30% of the invoice price.

**Specifications.** Seller may, at its option, make changes in the designs, specifications or components of the Goods to improve the safety of such Goods, or if in Seller's judgment, such changes will be beneficial to their operation or use. Buyer may not make any changes in the specifications for the Goods unless Seller approves of such changes in writing, in which event Seller may impose additional charges to implement such changes.

**Limited Warranty.** Seller warrants to the original end-user that the Goods manufactured or provided by Seller under this Agreement shall be free of defects in material or workmanship for a period of twelve (12) months from the date of purchase, provided that the Goods are installed, used, and maintained in accordance with any instruction manual or technical guidelines provided by the Seller or supplied with the Goods, if applicable. The original end-user must give written notice to Seller of any suspected defect in the Goods prior to the expiration of the warranty period. The original end-user must also obtain a RGA from Seller prior to returning any Goods to Seller for warranty service under this paragraph. Seller will not accept any responsibility for Goods returned without a RGA. The original end-user shall be responsible for all costs and expenses associated with returning the Goods to Seller for warranty service. In the event of a defect, Seller, at its sole option, shall repair or replace the defective Goods or refund to the original end-user the purchase price for such defective Goods. Goods are not eligible for replacement or return after a period of 30 days from date of receipt. The foregoing warranty is Seller's sole obligation, and the original end-user's exclusive remedy, with regard to any defective Goods. This limited warranty does not apply to: (a) die sets, tooling, and saw blades; (b) periodic or routine maintenance and setup, (c) repair or replacement of the Goods due to normal wear and tear, (d) defects or damage to the Goods resulting from misuse, abuse, neglect, or accidents, (e) defects or damage to the Goods resulting from improper or unauthorized alterations, modifications, or changes; and (f) any Goods that has not been installed and/or maintained in accordance with the instruction manual or technical guidelines provided by Seller.

**EXCLUSION OF OTHER WARRANTIES.** THE FOREGOING LIMITED WARRANTY IS IN LIEU OF ALL OTHER WARRANTIES, EXPRESS OR IMPLIED. ANY AND ALL OTHER EXPRESS, STATUTORY OR IMPLIED WARRANTIES, INCLUDING BUT NOT LIMITED TO, ANY WARRANTY OF MERCHANTABILITY OR FITNESS FOR ANY PARTICULAR PURPOSE ARE EXPRESSLY DISCLAIMED. NO WARRANTY IS MADE WHICH EXTENDS BEYOND THAT WHICH IS EXPRESSLY CONTAINED HEREIN.

**Limitation of Liability.** IN NO EVENT SHALL SELLER BE LIABLE TO BUYER OR ANY OTHER PARTY FOR ANY INCIDENTAL, CONSEQUENTIAL OR SPECIAL DAMAGES (INCLUDING, WITHOUT LIMITATION, LOST PROFITS OR DOWN TIME) ARISING FROM OR IN MANNER CONNECTED WITH THE GOODS, ANY BREACH BY SELLER OR ITS AGENTS OF THIS AGREEMENT, OR ANY OTHER CAUSE WHATSOEVER, WHETHER BASED ON CONTRACT, TORT OR ANY OTHER THEORY OF LIABILITY. BUYER'S REMEDY WITH RESPECT TO ANY CLAIM ARISING UNDER THIS AGREEMENT IS STRICTLY LIMITED TO NO MORE THAN THE AMOUNT PAID BY THE BUYER FOR THE GOODS.



**Force Majeure.** Seller shall not be responsible for any delay in the delivery of, or failure to deliver, Goods due to causes beyond Seller's reasonable control including, without limitation, acts of God, acts of war or terrorism, enemy actions, hostilities, strikes, labor difficulties, embargoes, non-delivery or late delivery of materials, parts and equipment or transportation delays not caused by the fault of Seller, delays caused by civil authorities, governmental regulations or orders, fire, lightening, natural disasters or any other cause beyond Seller's reasonable control. In the event of any such delay, performance will be postponed by such length of time as may be reasonably necessary to compensate for the delay.

**Installation.** If Buyer purchases any Goods that require installation, Buyer shall, at its expense, make all arrangements and connections necessary to install and operate the Goods. Buyer shall install the Goods in accordance with any Seller instructions and shall indemnify Seller against any and all damages, demands, suits, causes of action, claims and expenses (including actual attorneys' fees and costs) arising directly or indirectly out of Buyer's failure to properly install the Goods.

**Work By Others; Safety Devices.** Unless agreed to in writing by Seller, Seller has no responsibility for labor or work performed by Buyer or others, of any nature, relating to design, manufacture, fabrication, use, installation or provision of Goods. Buyer is solely responsible for furnishing, and requiring its employees and customers to use all safety devices, guards and safe operating procedures required by law and/or as set forth in manuals and instruction sheets furnished by Seller. Buyer is responsible for consulting all operator's manuals, ANSI or comparable safety standards, OSHA regulations and other sources of safety standards and regulations applicable to the use and operation of the Goods.

**Remedies.** Each of the rights and remedies of Seller under this Agreement is cumulative and in addition to any other or further remedies provided under this Agreement or at law or equity.

**Attorney's Fees.** In the event legal action is necessary to recover monies due from Buyer or to enforce any provision of this Agreement, Buyer shall be liable to Seller for all costs and expenses associated therewith, including Seller's actual attorneys' fees and costs.

**Governing Law/Venue.** This Agreement shall be construed and governed under the laws of the State of Wisconsin, without application of conflict of law principles. Each party agrees that all actions or proceedings arising out of or in connection with this Agreement shall be commenced, tried, and litigated only in the state courts sitting in Manitowoc County, Wisconsin or the U.S. Federal Court for the Eastern District of Wisconsin. Each party waives any right it may have to assert the doctrine of "forum non conveniens" or to object to venue to the extent that any proceeding is brought in accordance with this section. Each party consents to and waives any objection to the exercise of personal jurisdiction over it by courts described in this section. Each party waives to the fullest extent permitted by applicable law the right to a trial by jury.

**Summary of Return Policy.**

- 10 Day acceptance period from date of delivery. Damage claims and order discrepancies will not be accepted after this time.
- You must obtain a Baileigh issued RGA number PRIOR to returning any materials.
- Returned materials must be received at Baileigh in new condition and in original packaging.
- Altered items are not eligible for return.
- Buyer is responsible for all shipping charges.
- A 30% re-stocking fee applies to all returns.

Baileigh Industrial makes every effort to ensure that our posted specifications, images, pricing and product availability are as correct and timely as possible. We apologize for any discrepancies that may occur. Baileigh Industrial reserves the right to make any and all changes deemed necessary in the course of business including but not limited to pricing, product specifications, quantities, and product availability.

**For Customer Service & Technical Support:**

Please contact one of our knowledgeable Sales and Service team members at:  
(920) 684-4990 or e-mail us at [sales@baileigh.com](mailto:sales@baileigh.com)



## **INTRODUCTION**

*The quality and reliability of the components assembled on a Baileigh Industrial machine guarantee near perfect functioning, free from problems, even under the most demanding working conditions. However if a situation arises, refer to the manual first. If a solution cannot be found, contact the distributor where you purchased our product. Make sure you have the serial number and production year of the machine (stamped on the nameplate). For replacement parts refer to the assembly numbers on the parts list drawings.*

*Our technical staff will do their best to help you get your machine back in working order.*

### **In this manual you will find: (when applicable)**

- Safety procedures
- Correct installation guidelines
- Description of the functional parts of the machine
- Capacity charts
- Set-up and start-up instructions
- Machine operation
- Scheduled maintenance
- Parts lists

## **GENERAL NOTES**

After receiving your equipment remove the protective container. Do a complete visual inspection, and if damage is noted, **photograph it for insurance claims** and contact your carrier at once, requesting inspection. Also contact Baileigh Industrial and inform them of the unexpected occurrence. Temporarily suspend installation.

Take necessary precautions while loading / unloading or moving the machine to avoid any injuries.

Your machine is designed and manufactured to work smoothly and efficiently. Following proper maintenance instructions will help ensure this. Try and use original spare parts, whenever possible, and most importantly; **DO NOT** overload the machine or make any modifications.



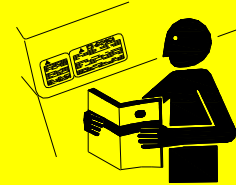
**Note:** *This symbol refers to useful information throughout the manual.*



## IMPORTANT

### PLEASE READ THIS OPERATORS MANUAL CAREFULLY

It contains important safety information, instructions, and necessary operating procedures. The continual observance of these procedures will help increase your production and extend the life of the equipment.



## SAFETY INSTRUCTIONS

### LEARN TO RECOGNIZE SAFETY INFORMATION

This is the safety alert symbol. When you see this symbol on your machine or in this manual, **BE ALERT TO THE POTENTIAL FOR PERSONAL INJURY!**



Follow recommended precautions and safe operating practices.

### UNDERSTAND SIGNAL WORDS

A signal word – **DANGER**, **WARNING**, or **CAUTION** is used with the safety alert symbol. **DANGER** identifies a hazard or unsafe practice that will result in severe **Injury or Death.**



Safety signs with signal word **DANGER** or **WARNING** are typically near specific hazards.



General precautions are listed on **CAUTION** safety signs. **CAUTION** also calls attention to safety messages in this manual.





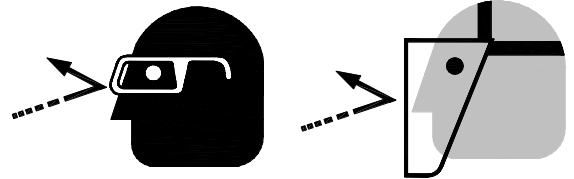


**SAVE THESE INSTRUCTIONS.**  
**Refer to them often and use them to instruct others.**



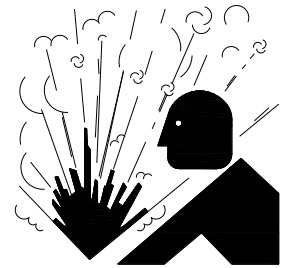
**PROTECT EYES**

Wear safety glasses or suitable eye protection when working on or around machinery.



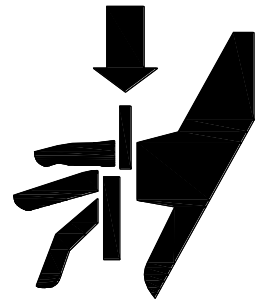
**HYDRAULIC HOSE FAILURE**

Exercise **CAUTION** around hydraulic hoses in case of a hose or fitting failure.



**BEWARE OF SHEAR AND PINCH HAZARD**

Keep hands and fingers clear from between the scissors lift arms. **NEVER** place your hand or any part of your body in the scissors area of this machine unless it is locked and supported to prevent unintended closing of the scissors.



Wear Eye Protection



Read Manual



Two Person Lift



Pressure



General Danger



Pinch Point



## **SAFETY PRECAUTIONS**



Metal working can be dangerous if safe and proper operating procedures are not followed. As with all machinery, there are certain hazards involved with the operation of the product. Using the machine with respect and caution will considerably lessen the possibility of personal injury. However, if normal safety precautions are overlooked or ignored, personal injury to the operator may result.

Safety equipment such as guards, hold-downs, safety glasses, dust masks and hearing protection can reduce your potential for injury. But even the best guard won't make up for poor judgment, carelessness or inattention. **Always use common sense** and exercise **caution** in the workshop. If a procedure feels dangerous, don't try it.

**REMEMBER: Your personal safety is your responsibility.**



**WARNING: FAILURE TO FOLLOW THESE RULES MAY RESULT IN SERIOUS PERSONAL INJURY**

### **Dear Valued Customer:**

- All Baileigh machines should be used only for their intended use.
- Baileigh does not recommend or endorse making any modifications or alterations to a Baileigh machine. Modifications or alterations to a machine may pose a substantial risk of injury to the operator or others and may do substantial damage to the machine.
- Any modifications or alterations to a Baileigh machine will invalidate the machine's warranty.

### **PLEASE ENJOY YOUR BAILEIGH MACHINE! ....PLEASE ENJOY IT SAFELY!**

1. **FOR YOUR OWN SAFETY, READ INSTRUCTION MANUAL BEFORE OPERATING THE MACHINE.** Learn the machine's application and limitations as well as the specific hazards.
2. Only trained and qualified personnel can operate this machine.
3. Make sure guards are in place and in proper working order before operating machinery.
4. Remove any adjusting tools. Before operating the machine, make sure any adjusting tools have been removed.
5. Keep work area clean. Cluttered areas invite injuries.
6. Overloading machine. By overloading the machine you may cause injury from flying parts. **DO NOT** exceed the specified machine capacities.





7. Use the right tool for the job. DO NOT attempt to force a small tool or attachment to do the work of a large industrial tool. DO NOT use a tool for a purpose for which it was not intended. DO NOT ride on or use this machine to transport people or persons in any way.
8. Dress appropriate. DO NOT wear loose fitting clothing or jewelry as they can be caught in moving machine parts. Protective clothing and steel toe shoes are recommended when using machinery. Wear a restrictive hair covering to contain long hair.
9. Use eye and ear protection. Always wear ISO approved impact safety goggles. Wear a full-face shield if you are producing metal filings.
10. Do not overreach. Maintain proper footing and balance at all times. DO NOT reach over or across a running machine.
11. Stay alert. Watch what you are doing and use common sense. DO NOT operate any tool or machine when you are tired.
12. Check for damaged parts. Before using any tool or machine, carefully check any part that appears damaged. Check for alignment and binding of moving parts that may affect proper machine operation.
13. Keep children away. Children must never be allowed in the work area. DO NOT let them handle machines, tools, or extension cords.
14. Store idle equipment. When not in use, tools must be stored in a dry location to inhibit rust. Always lock up tools and keep them out of reach of children.
15. DO NOT operate machine if under the influence of alcohol or drugs. Read warning labels on prescriptions. If there is any doubt, DO NOT operate the machine.
16. Keep visitors a safe distance from the work area.



## TECHNICAL SPECIFICATIONS

### B-CART

Table Size	32" x 20" (813 x 508mm)
Minimum Table Height	10.2" (259mm)
Maximum Table Height	30.5" (775mm)
Capacity	660lbs. (345kg)
Power	Manual
Shipping Weight	143lbs. (65kg)

### B-CARTX2

Table Size	32" x 20" (813 x 508mm)
Minimum Table Height	14.1" (358mm)
Maximum Table Height	50.5" (1283mm)
Capacity	660lbs. (345kg)
Power	Manual
Shipping Weight	227lbs. (103kg)

## TECHNICAL SUPPORT

Our technical support department can be reached at 920.684.4990, and asking for the support desk for purchased machines. Tech Support handles questions on machine setup, schematics, warranty issues, and individual parts needs: (other than die sets and blades).

For specific application needs or future machine purchases contact the Sales Department at: [sales@baileigh.com](mailto:sales@baileigh.com), Phone: 920.684.4990, or Fax: 920.684.3944.



**Note:** *The photos and illustrations used in this manual are representative only and may not depict the actual color, labeling or accessories and may be intended to illustrate technique only.*



**Note:** *The specifications and dimensions presented here are subject to change without prior notice due to improvements of our products.*



## UNPACKING AND CHECKING CONTENTS

Your Baileigh machine is shipped complete. Separate all parts from the packing material and check each item carefully. Make certain all items are accounted for before discarding any packing material.

**⚠ WARNING: SUFFOCATION HAZARD!** Immediately discard any plastic bags and packing materials to eliminate choking and suffocation hazards to children and animals.  
If any parts are missing, **DO NOT** place the machine into service until the missing parts are obtained and installed correctly.

### Cleaning

**⚠ WARNING: DO NOT USE** gasoline or other petroleum products to clean the machine. They have low flash points and can explode or cause fire.

**⚠ CAUTION:** When using cleaning solvents work in a well-ventilated area. Many cleaning solvents are toxic if inhaled.

Your machine may be shipped with a rustproof waxy coating and/or grease on the exposed unpainted metal surfaces. Fully and completely remove this protective coating using a degreaser or solvent cleaner. Moving items will need to be moved along their travel path to allow for cleaning the entire surface. For a more thorough cleaning, some parts will occasionally have to be removed. **DO NOT USE** acetone or brake cleaner as they may damage painted surfaces.

Follow manufacturer's label instructions when using any type of cleaning product. After cleaning, wipe unpainted metal surfaces with a light coating of quality oil or grease for protection.



**Important:** This waxy coating is **NOT** a lubricant and will cause the machine to stick and lose performance as the coating continues to dry.





## INSTALLATION

### **IMPORTANT:**

Consider the following when looking for a suitable location to place the machine:

- Overall weight of the machine.
- Weight of material being processed.
- Sizes of material to be processed through the machine.
- Space needed for auxiliary stands, work tables, or other machinery.
- Clearance from walls and other obstacles.
- Maintain an adequate working area around the machine for safety.
- Have the work area well illuminated with proper lighting.
- Keep the floor free of oil and make sure it is not slippery.
- Remove scrap and waste materials regularly, and make sure the work area is free from obstructing objects.
- If long lengths of material are to be fed into the machine, make sure that they will not extend into any aisles.
- **LEVELING:** The machine should be sited on a level, concrete floor. Provisions for securing it should be in position prior to placing the machine. The accuracy of any machine depends on the precise placement of it to the mounting surface.
- **FLOOR:** This tool distributes a large amount of weight over a small area. Make certain that the floor is capable of supporting the weight of the machine, work stock, and the operator. The floor should also be a level surface. If the unit wobbles or rocks once in place, be sure to eliminate by using shims.
- **WORKING CLEARANCES:** Take into consideration the size of the material to be processed. Make sure that you allow enough space for you to operate the machine freely.



## ASSEMBLY AND SET UP

The table is shipped mostly assembled.

1. Install the handle rail into the tube pockets (A) at the end of the table and tighten the M8 x 30 locking bolts enough to securely hold the handle in position.
2. Insert the foot pedal into the pump lever (B) and secure in place with the bolt.



## OPERATION

**⚠ CAUTION:** Keep hands and fingers clear of the scissors arms. Stand behind the handle and watch for possible pinch points whenever raising or lowering the table.

1. Place the material on the table.
  - a. Always place the materials on the table so that they are stable and well balance.
  - b. Material should not extend into or interfere with the handle and operating controls.
  - c. Lower the table as low as is practical when moving the table with materials on it.
  - d. Always engage the caster brakes when not moving the table to prevent unintended movement.
2. To Raise the table:
  - a. Place both hands on the handle to prevent table movement and to assist in maintaining balance and use either foot to pump the foot pedal to raise the table to the desired height.
3. To Lower the table:
  - a. Carefully squeeze the control lever in the upper right corner of the handle and lower the table to the desired height.



## LUBRICATION AND MAINTENANCE

 **WARNING:** Maintenance should be performed on a regular basis by qualified personnel.

Always follow proper safety precautions when working on or around any machinery. Always engage both safety prop bars during maintenance and repair operations when working in on or around the scissors mechanism.

- Check daily for any unsafe conditions and fix immediately.
- Check that all nuts and bolts are properly tightened.
- On a weekly basis clean the machine and the area around it.
- Lubricate upper and lower rollers monthly or as needed.
- Apply rust inhibitive lubricant to all non-painted surfaces.



**Note:** *Proper maintenance can increase the life expectancy of your machine.*

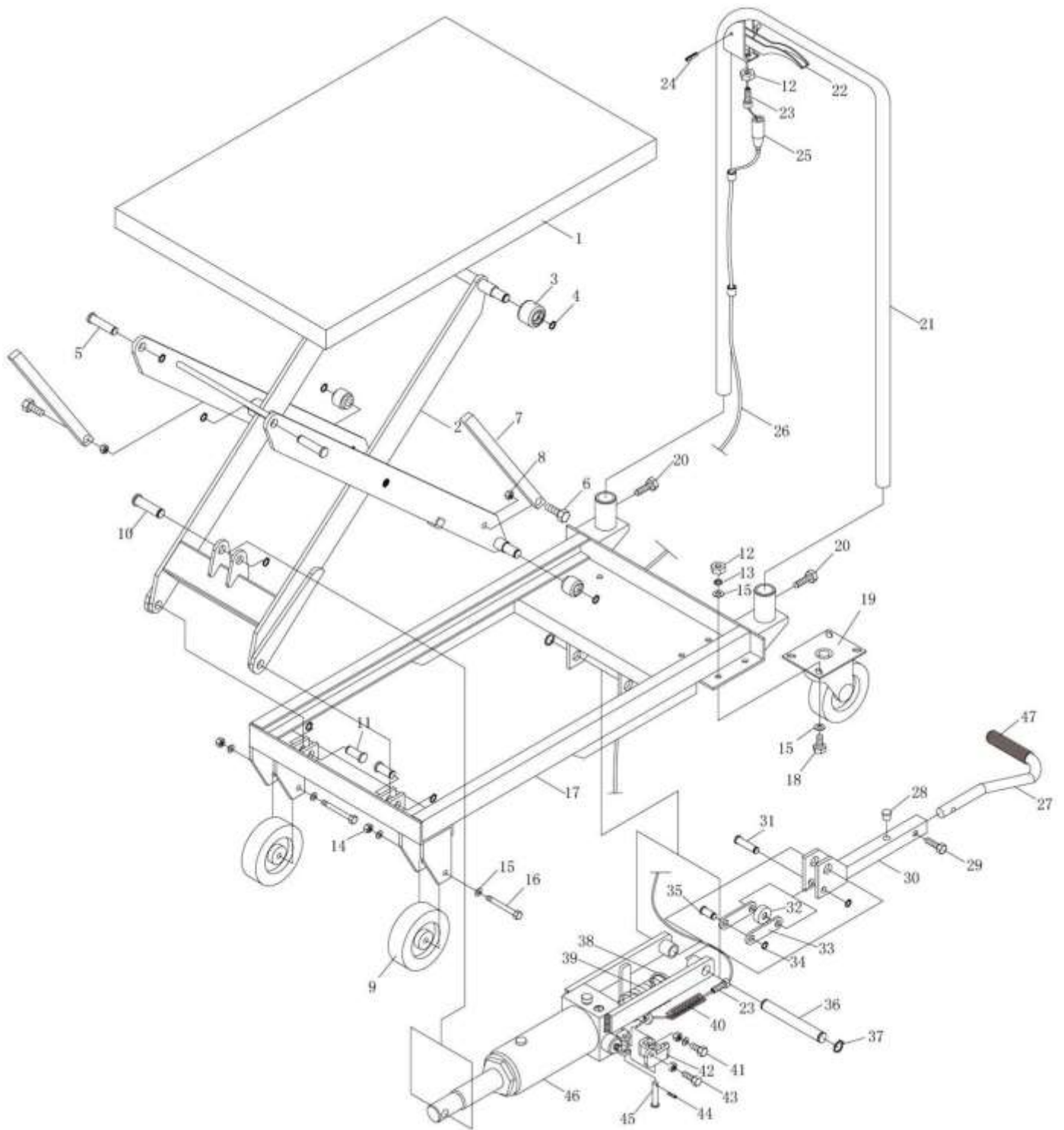
### Hydraulic Oil / System

The hydraulic oil is prefilled. Use a standard hydraulic jack oil if needed to top off or replace the oil.





## B-CART PARTS DIAGRAM





**B-Cart Parts List**

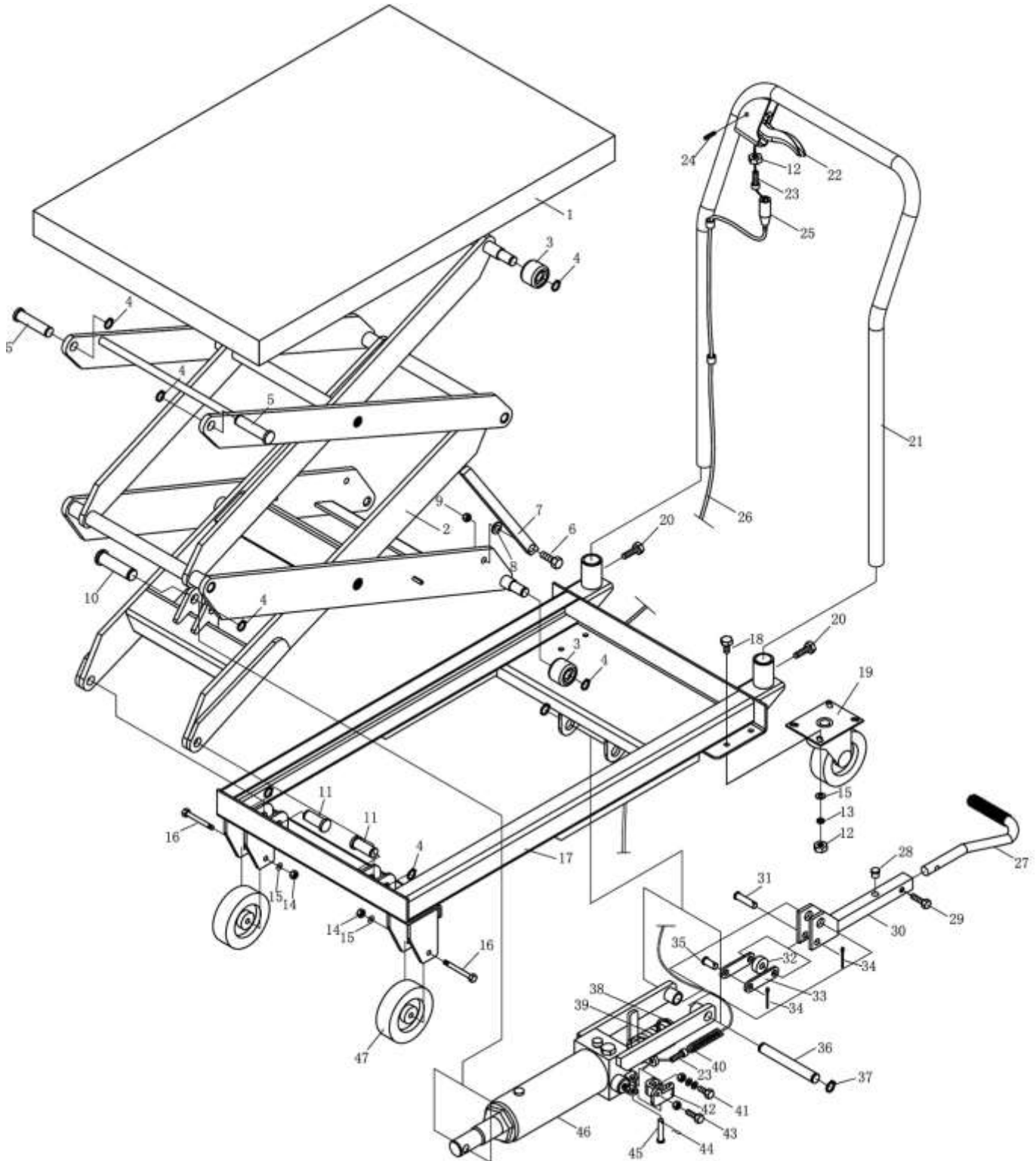
Item	Description	Qty.
1	Top Table	1
2	Lift Frame	1
3	Shaft	2
4	Retaining Ring Ø12	9
5	Pin (1)	2
6	Bolt	2
7	Safety Bar	2
8	Nut	2
9	Front Wheel	2
10	Pin (2)	1
11	Pin (3)	2
12	Nut M8	11
13	Lock Washer	8
14	Nut	2
15	Washer	22
16	Hex Bolt M8 x 60	2
17	Base Assembly	1
18	Bolt M8 x 15	8
19	Caster Assembly	2
20	Bolt M8 x 30	2
21	Handle	1
22	Brake Handle	1
23	Bolt M8 x 25	1
24	Pin	1
25	Bolt Sleeve	1
26	Brake Thread	1
27	Lifting Pedal	1
28	Bumper	1
29	Bolt M8 x 25	1
30	Lifting Pedal Assembly	1
31	Pin (4)	1
32	Shaft Sleeve	1



Item	Description	Qty.
33	Connecting Plate	2
34	Retaining Ring	2
35	Pin (5)	1
36	Pin (6)	1
37	Retaining Ring	2
38	Spring Cap	1
39	Spring	1
40	Spring	1
41	Bolt	1
42	Release Valve Link	1
43	Release Valve Bolt	1
44	R-Pin	1
45	Pin (7)	1
46	Pump	1
47	Handle Sleeve	1



## B-CARTX2 PARTS DIAGRAM





**B-CartX2 Parts List**

Item	Description	Qty.
P01	Top Table	1
P02	Lift Frame	1
P03	Shaft	4
P04	Retaining Ring	9
P05	Pin (1)	2
P06	Bolt	2
P07	Safety Bar	2
P08	Washer	2
P09	Nut	2
P10	Pin (2)	1
P11	Pin (3)	2
P12	Nut M8	12
P13	Lock Washer	8
P14	Nut	2
P15	Washer	12
P16	Hex Bolt M10 x 6	2
P17	Base Assembly	1
P18	Bolt M8 x 18	8
P19	Caster Assembly	2
P20	Bolt M8 x 35	2
P21	Handle	1
P22	Brake Handle	1
P23	Bolt M8 x 25	2
P24	Pin	1
P25	Bolt Sleeve	1
P26	Brake Thread	1
P27	Lifting Pedal	1
P28	Bumper	1
P29	Bolt M8 x 25	1
P30	Lifting Pedal Assembly	1
P31	Pin (4)	1
P32	Shaft Sleeve	1
P33	Connecting Plate	2

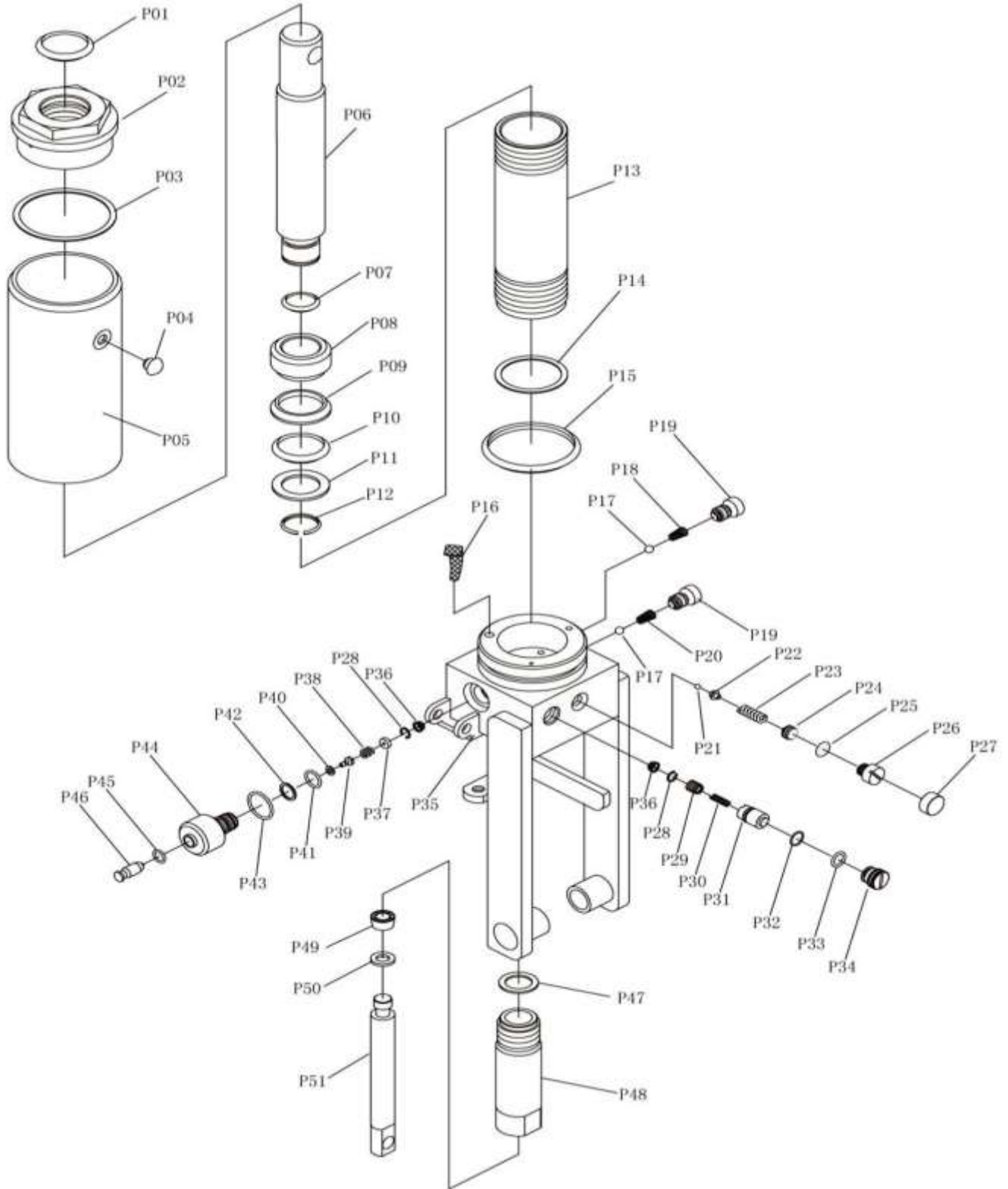


Item	Description	Qty.
P34	Split Pin	2
P35	Pin (5)	1
P36	Pin (6)	1
P37	Retaining Ring	2
P38	Spring Cap	1
P39	Spring	1
P40	Spring	1
P41	Bolt	1
P42	Release Valve Link	1
P43	Release Valve Bolt	1
P44	R-Pin	1
P45	Pin (7)	1
P46	Pump	1
P47	Front Wheel	2





## CYLINDER AND PUMP PARTS DIAGRAM





**Cylinder And Pump Parts List**

Item	Description	Qty.
P01	O-ring	1
P02	Top nut	1
P03	Nylon ring	1
P04	Oil plug	1
P05	Reservoir	1
P06	Ram	1
P07	O-ring	1
P08	Piston	1
P09	Cup seal	1
P10	O-ring	1
P11	Washer	1
P12	Retaining ring	1
P13	Cylinder	1
P14	Nylon ring	1
P15	O-ring	1
P16	Oil filter	1
P17	Ball	2
P18	Spring	1
P19	Screw	2
P20	Spring	1
P21	Ball	1
P22	Ball cup	1
P23	Spring	1
P24	Screw	1
P25	O-ring	1
P26	Screw	1
P27	Plastic cap	1
P28	Lock washer	2
P29	Damp valve stem	1
P30	Spring	1
P31	Damp valve seat	1
P32	O-ring	1
P33	O-ring	1



Item	Description	Qty.
P34	Screw	1
P35	Pump base	1
P36	Oil filter	2
P37	Spring plate	1
P38	Spring	1
P39	Release valve	1
P40	Seal ring	1
P41	O-ring	1
P42	Washer	1
P43	O-ring	1
P44	Damp valve seat	1
P45	O-ring	1
P46	Damp valve rod	1
P47	Copper washer	1
P48	Pump cylinder	1
P49	Seal ring	1
P50	Seal ring	1
P51	Pump piston	1



**BAILEIGH INDUSTRIAL, INC. 1625 DUFEEK DRIVE MANITOWOC, WI 54220**  
**PHONE: 920. 684. 4990 FAX: 920. 684. 3944**  
**[www.baileigh.com](http://www.baileigh.com)**

**BAILEIGH INDUSTRIAL, INC. 1455 S. CAMPUS AVENUE ONTARIO, CA 91761**  
**PHONE: 920. 684. 4990 FAX: 920. 684. 3944**

**BAILEIGH INDUSTRIAL LTD. UNIT D SWIFT POINT**  
**SWIFT VALLEY INDUSTRIAL ESTATE, RUGBY**  
**WEST MIDLANDS, CV21 1QH UNITED KINGDOM**  
**PHONE: +44 (0)24 7661 9267 FAX: +44 (0)24 7661 9276**  
**[WWW.BAILEIGH.CO.UK](http://WWW.BAILEIGH.CO.UK)**

**BAILEIGH INDUSTRIAL PTY. LTD.**  
**P.O BOX 1573, 126 MELROSE DRIVE TULLAMARINE,**  
**VIC 3043 AUSTRALIA**  
**PHONE: 011 61 383 743 888**  
**[WWW.BAILEIGH.COM.AU](http://WWW.BAILEIGH.COM.AU)**