

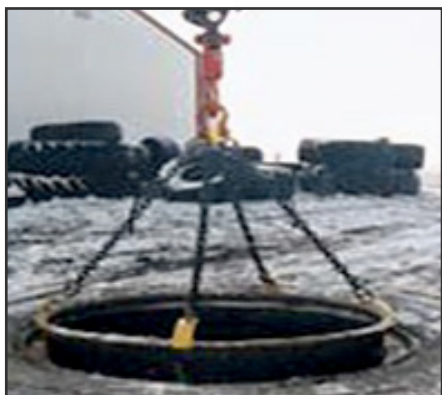


# 93000

## FLANGE RING PULLER

### Flange Ring Puller

- Lifts the rim base and bead seat band from the tire
- Aids in bead seating during inflation
- Attaches to a standard boom style service truck
- 4 point hook/chain assembly for optimal lifting
- Chain lengths of 30" (76.2 cm)
- Includes 2 flat hooks and 2 tapered hooks to allow use on ALL rim styles
- Weight: 32 lbs. (14.5 kg)



2347 Circuit Way  
Brooksville, FL 34604  
352.799.1111 - sales@ameintl.net



[www.ameintl.net](http://www.ameintl.net)