



INSTRUCTION MANUAL & PARTS BREAKDOWN



Model 73080

Floor Mount Tire Spreader

2347 Circuit Way, Brooksville, Florida, USA 34604
Phone: (+1) 352-799-1111 Toll Phone: (+1) 877-775-4AME (4263)
Fax: (+1) 352-799-1112 E-mail: sales@ameintl.net www.ameintl.net



INSTRUCTION MANUAL & PARTS BREAKDOWN

! WARNING !

To avoid serious personal injury, always wear proper protective gear, such as hard hats, safety glasses, gloves, and steel toe shoes when using hydraulic equipment. Failure to chock the wheels and crib the vehicle can result in Serious injury or death. Always deflate tires before removing a wheel, a rim, or part of a rim clamp or nut. If you do not deflate the tire, the tire could explode, causing serious injury or death. Always stand to one side of the rim when using the bead breaker. Standing to one side of the bead breaker allows you to maintain control of the bead breaker. If it is not seated properly and flies off the rim, the bead breaker could cause serious injury or death.



IMPORTANT RECEIVING INFORMATION

Visually inspect all parts for shipping damage. If you find shipping damage, notify the carrier at once. Shipping damage is not covered by your warranty. The carrier is responsible for all costs of replacement or repair caused by shipping damage.

DESCRIPTION

The 73080 Floor Mount Tire Spreader is equipped with multiple height and width adjustments. It is for use with passenger and light trucks (13" – 20"). Heavy duty rollers cradle the tire. Weight: 63 lbs (29 kg).

SAFETY INFORMATION

To avoid personal injury or property damage while using this product, read and follow all **DANGERS, WARNINGS, CAUTIONS**, and **INSTRUCTIONS** that are attached to, or included with, this product.

1. Follow the instructions of the tire manufacturer and the vehicle manufacturer when deflating, demounting, mounting, and inflating tires.
2. These operating instructions do not apply to any specific rim. Therefore, contact the rim manufacturer for the correct procedure for your rim.
3. For the publication, "Multipiece Rim Matching Chart" contact the United States Department of Labor, Occupational Safety, and Health Administration (OSHA), Washington, DC, 20210, 202-219-6091, or contact AME Intl at 1-877-755-4263. If you are outside the U.S., contact your local government officials.
4. AME Intl cannot be held responsible for damage or injury resulting from unsafe use of this product; lack of maintenance; or incorrect product and system application.
5. Contact AME Intl. when in doubt about safety precautions or applications.

CAUTION

The floor mount tire spreader, and all tire tools, should be used only by per-sons properly trained according to OSHA Regulation #29CFR1910.177, "Servicing Single-Piece & Multi-Piece Wheels." Free copies of this regulation are available upon request from AME Intl.



WARNING

To avoid serious personal injury, always wear proper protective gear, such as hard hats, safety glasses, gloves, and steel toe shoes when using hydraulic equipment.



INSTRUCTION MANUAL & PARTS BREAKDOWN

CAUTION

- Before using the product, insure that carefully read and fully understand the instructions manual and all stickers noted on the product. This is necessary to avoid injury to the operator and damage to the product.
- Use this product only for spreading tire and repairing the tire protective wrap. Do not use this product for any other purpose. Our company will not be responsible for the problems caused by any improper operations.
- Keep the hooks and claws of machine clean during working, Clean the extraneous matter such as grease in order to avoid injury to the operator caused by sliding.
- Do not use this product if it is visibly worn, distorted or damaged, deal with it according to the local rules and regulations on waste treatment.
- In order to avoid hurting the eyes by the sundries, this machine must be operated by the professionals who wears appropriate eye protection during the whole repairing process.



INSTRUCTION MANUAL & PARTS BREAKDOWN

Product Description

The Floor Mount Tire Spreader is designed for fixing the tires and spreading the tires during repairing tires of cars, small trucks and microbus, in order to work for the tire polishing, cleaning and affixing films, etc. Our product is of humanized designing style, equipped with adjustable work light and tools rack to improve work efficiency, enable the tire repairing work to be more convenient and faster.

Technical Parameter

Tire width: 145MM—275MM

Tire diameter: 11"—24"



INSTRUCTION MANUAL & PARTS BREAKDOWN



1. Spread hook sets1

2. Sliding bush

3. Locking plate

4. Spread hook sets2

5. Roller

6. Turnplate

7. Guiding pole

8. Pressure spring

9. Foot board

10. Base

11. Roller support

12. Adjustable bar of
sliding bush



INSTRUCTION MANUAL & PARTS BREAKDOWN

INSTALLATION

1. Place main body of this product on solid ground and keep its flat.
(Expansion blots are recommended) , and to connect the roller support with the pillar.



2. Put Spread hook set2 into locating hole of the Roller support, use circlip at the end of the hook sets to fix it on the supporting base, shown as pictures.



3. Pull down the ball handle of the adjustable bar of sliding bush, and put the spread hook set1 into the roller support to the appropriate hole.

Shown as picture.





INSTRUCTION MANUAL & PARTS BREAKDOWN

Operation

1. Before starting the machine, check carefully whether the fasteners on the machine are loose or not due to transportation. If yes, must be re-tightened before using.
2. Put the tire on the roller sets, and adjust the distance between the two hooks according to tire dimension.
 - a. Adjusting spread hook set1: Pull down the ball handle of the adjustable bar of slide bush and choose appropriate hole to locate.
 - b. Adjusting spread hook set2: Choose appropriate hole and height.
3. Fix the tire on the spreader; put the hooks into the tire by hand.



4. Pull the handle and spread the tire, lock the hook with locking plate.





INSTRUCTION MANUAL & PARTS BREAKDOWN

5. If you want to tilt the tire, press the foot board and whirl the roller support to the right position and lock.



6. When finishing tire repairing, loose the locking plate and hooks, remove the hooks from the tire, unload the tire.





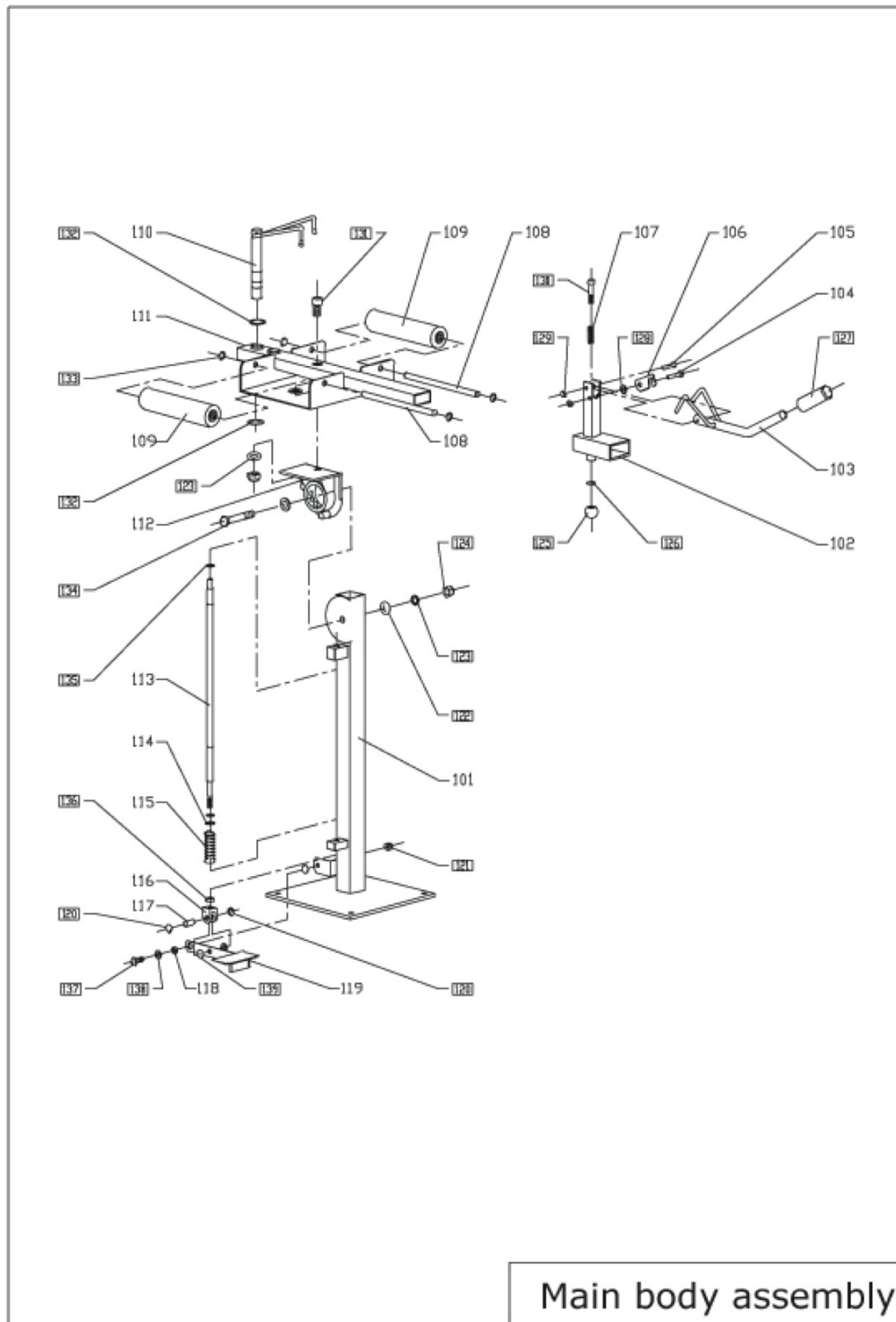
INSTRUCTION MANUAL & PARTS BREAKDOWN

Maintenance

- Clear the dust and sundries away at any time and check whether the fastener is loose or not.
- Drip oil to the pin and the friction motion surfaces regularly to reduce friction, to extend machine life span.



INSTRUCTION MANUAL & PARTS BREAKDOWN





INSTRUCTION MANUAL & PARTS BREAKDOWN

No.	Code	Description	Quantity
101	410000	Post	one
102	210000	Sliding bush	one
103	230000	Spread hook sets2	one
104	200002	Screw 2	one
105	200001	Screw 1	one
106	200003	Locking plate	one
107	200006	Pressure spring	one
108	100001	Axis of roller	two
109	360000	Roller sets	two
110	220000	Spread hook sets1	one
111	110000	Roller support	one
112	420000	Turn plate welding sets	one
113	400001	Pull rod	one
114	400003	Retainer ring	one
115	400002	Pressure spring	one
116	400005	Connector	one
117	400004	Pin roll	one
118	300003	Spacer bush	one
119	430000	Foot board	one
120		Circlip for shaft 12	two
121		Lock nut M10	one
122		Even gasket 16	three
123		Grower gasket 16	two
124		Lock nut M16	two



INSTRUCTION MANUAL & PARTS BREAKDOWN

125		Ball handle BM10X32	1
126		Hexagon thin nut M10	1
127		Rubber cover	1
128		Even gasket 8	1
129		Lock nut M8	2
130		Socket cap screw M10X50	1
131		Socket cap screw M16X30	1
132		Circlip for shaft 25	2
133		Circlip for shaft 14	4
134		Hexagon head bolt M16X90	1
135		Circlip for shaft 16	2
136		Hexangular nut M10	1

NO.	Code	Description	Quantity
137		Even gasket 10	2
138		Hexagon head bolt M10X25	1
139		Even gasket 12	2
140			