



SKIRTED SLEEVE NUTS

58033 58034 58035 58036

Skirted Sleeve Nuts

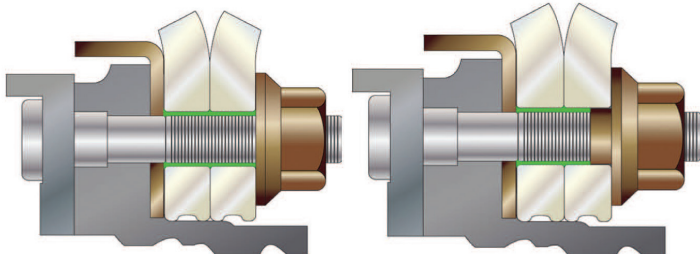
Meant to reduce wheel vibrations and help prevent the unpredictable wheel-off situations. Specifically designed for Class 8 Truck Steer & Drive Axles, and Trailers.

In real world use, it is essential to re-torque all wheel nuts. This is attributed to components settling in or from temperature changes due to short bursts of starts and stops. The wheel is still held in position, concentric to the hub, however the wheel ends will vibrate, surfaces rust and "Clocking" occurs. Clocking causes premature stud and stud hole wear.

Over time wheel nuts loosen which is a dangerous condition. Standard wheel nuts clamp against the disc surface but fail to eliminate the extra space between the stud and the stud hole. Our line of wheel sleeve products helps lessen that space.

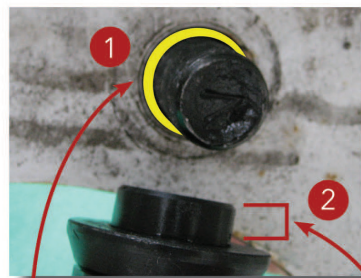
Features:

- The Sleeve offers more thread engagement and deeper penetration
- The chamfered nose allows for ease of wheel centering and installation
- Protects and covers the threads from wear and the elements
- Reduces vibration and the wear and tear on wheel ends
- Fills the gap between the stud and the stud hole and allows the rim to rest on the sleeve
- Lengths designed for specific axle applications and wheel configurations

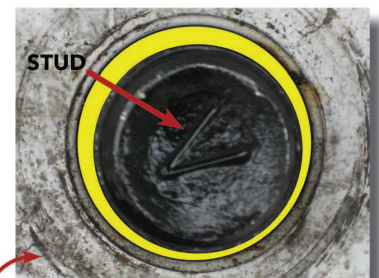


Void (highlighted in green) between stud and hole.

Skirted Nut fills void between stud and hole.



- 1) YELLOW HIGHLIGHT shows void between stud and stud hole.
- 2) Skirted Nut fills void between stud and hole.



Note marks on the disc (just outside stud hole) caused by "clocking". This nut had been torqued to specifications and retorqued per factory settings.



58033
6mm Sleeve
Designated for
Steel - Steers



58034
19mm Sleeve
Designated for
Aluminum - Steers
Steel/Steel - Drives
Steel Outer/ Alum.
Inner - Drives



58035
28mm Sleeve
Designated for H.D.
Aluminum Super
Single - Wide Base
Alum. Outer/Steel
Inner- Drives



58036
39mm Sleeve
Designated for
Dual Aluminum -
Drive Axle

2347 Circuit Way
Brooksville, FL 34604
352.799.1111 - sales@ameintl.net

