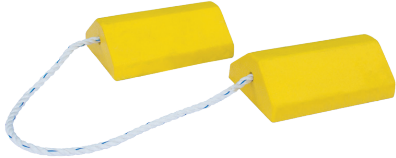




# AEROCHOCKS

## AVIATION WHEEL CHOCKS

### #15371 AeroChock™10 - Small



**Length:** 11.8" (300 mm)  
**Width:** 7.9" (200 mm)  
**Height:** 6.4" (162 mm)  
**Weight:** 6.6 lbs (3 kgs)

#### To Suit (but not limited to)



- Light Aircraft
- Corporate Jets
- Helicopters
- Small/Medium Military Aircraft
- Small Commercial Aircraft (ATR 72, B71 7, CRJ, ERJ, etc.)



### #15372 AeroChock™20 - Small - Medium



**Length:** 29.5" (750 mm)  
**Width:** 7.9" (200 mm)  
**Height:** 4.3" (110 mm)  
**Weight:** 8.8 lbs (4 kgs)

#### To Suit (but not limited to)



- Corporate Jets
- Medium Military Aircraft
- Small Commercial Aircraft
- Medium Commercial Aircraft (A320, B737, CS300).



### #15373 AeroChock™30 - Medium - Large



**Length:** 21.7" (550 mm)  
**Width:** 8.9" (225 mm)  
**Height:** 6.5" (165 mm)  
**Weight:** 13.9 lbs (6.3 kgs)

#### To Suit (but not limited to)



- Large Military Aircraft (C130, C17, A330 MRTT, KC-390, etc.)
- Medium Commercial Aircraft (A320, B737, CS300)
- Large Commercial Aircraft (B747, B767, B787, A330, A350, A380)



### #15374 AeroChock™40 - Medium - Large



**Length:** 47.25" (1200 mm)  
**Width:** 8.9" (225 mm)  
**Height:** 6.5" (165 mm)  
**Weight:** 29 lbs (13 kgs)

#### To Suit (but not limited to)



- Medium Commercial Aircraft (A320, B737, CS300)
- Large Commercial Aircraft (B747, B767, B787, A330, A350, A380)
- Large Military Aircraft (C130, C17, A330 MRTT, KC-390, etc.)

2347 Circuit Way  
Brooksville, FL 34604  
352.799.1111 - sales@ameintl.net

