



INSTRUCTION MANUAL



Model 11000

OTR Giant Tire Bead Breaker

2347 Circuit Way, Brooksville, Florida, USA 34604
Phone: (+1) 352-799-1111 Toll Phone: (+1) 877-775-4AME (4263)
Fax: (+1) 352-799-1112 E-mail: sales@ameintl.net www.ameintl.net



INSTRUCTION MANUAL

! WARNING !

To avoid serious personal injury, always wear proper protective gear, such as hard hats, safety glasses, gloves, and steel toe shoes when using hydraulic equipment. Always stand to one side of the rim when using the bead breaker. Standing to one side of the bead breaker allows you to maintain control of the bead breaker. If it is not seated properly and flies off the rim, the bead breaker could cause serious injury or death .



IMPORTANT RECEIVING INFORMATION

Visually inspect all parts for shipping damage. If you find shipping damage, notify the carrier at once. Shipping damage is not covered by your warranty. The carrier is responsible for all costs of replacement or repair caused by shipping damage.

DESCRIPTION

These bead breakers are used on 25" – 51" multi-piece rims with pry bar pockets. They are designed to break earthmover tire beads on any rim. They can be used with models 15900, 15920, 15940 or equivalent 10,000 psi [700 bar] pumps.

Model No.	11000	11050
Stroke [in. (cm)]	4.25 (10.8)	2.13 (5.4)
Capacity [U.S. Tons]	14	11

SAFETY INFORMATION

To avoid personal injury or property damage while using this product, read and follow all **DANGERS, WARNINGS, CAUTIONS, and INSTRUCTIONS** that are attached to, or included with, this product. **Follow the instructions of the tire manufacturer and the vehicle manufacturer when deflating, demounting, mounting, and inflating tires.** These operating instructions do not apply to any specific rim. Therefore, contact the rim manufacturer for the correct procedure for your rim. For the publication, "Multi-piece Rim Matching Chart" contact the United States Department of Labor Occupational Safety and Health Administration (OSHA), Washington, DC, 20210, 202-219-6091 or contact AME Intl. at 877-755-4263. If you are outside the U.S., contact your local government officials. AME Intl. cannot be held responsible for damage or injury resulting from unsafe use of this product, lack of maintenance, or incorrect product and system application. Contact AME Intl. when in doubt about safety precautions or applications.



CAUTION

The bead breaker, and all the tire tools, should be used only by persons properly trained according to OSHA Regulation #29CFR19010.177, "Servicing Single-Piece & Multi-Piece Wheels." Free copies of this regulation are available upon request from AME Intl.



INSTRUCTION MANUAL

OPERATING INSTRUCTIONS

REMOVING THE WHEEL

1. Chock the wheels opposite the jack.
2. Jack up the vehicle.
3. Crib the vehicle with safety stands or blocking devices after jacking it up. Do not work under an unblocked load.

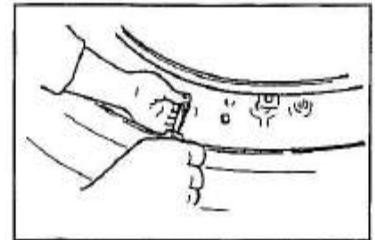


Figure 1

⚠ DANGER

Failure to chock the wheels and crib the vehicle can result in Serious injury or death.

4. Remove the valve core; deflate tires completely. (See Fig.1)
5. Insert a thin piece of wire through the valve stem to make sure air is flowing freely and the valve stem is not blocked. **NOTE:** Deflate both tires if you have a dual mounting.

⚠ DANGER

Always deflate tires before removing a wheel, a rim, or part of a rim clamp or nut. If you do not deflate the tire, the tire could explode, causing serious injury or death.

6a. If you are breaking the tire bead with the wheel on the vehicle: Proceed to Step 1 below, “Positioning the Bead Breaker.”

6b. If you are breaking the tire bead with the wheel off the vehicle: Remove the tire/rim assembly from the vehicle and place it flat on the ground with the gutter side up. Then proceed to Step 1 below, “Positioning the Bead Breaker.”

USING THE 11000 or 11050 BEAD BREAKERS

Positioning the Bead Breaker

1. Place the bead breaker into the continuous pry bar pocket, with the hook under the lip of the bead seat band. (Fig.2)
2. Position the bead breaker so that it is about 30° or at least 12 inches [0.3 m], to one side of the flange butt weld.
3. Adjust the ram adjusting screw, by hand, so that the bead breaker is less than perpendicular (90°) to the wheel. (Fig. 2)
4. Stand to one side of the bead breaker. Hold the bead breaker with one hand. (Fig. 3)

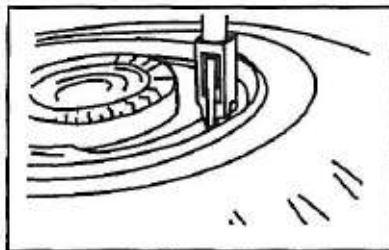


Figure 2



Figure 3



INSTRUCTION MANUAL

Activating the Bead Breaker

⚠ CAUTION

The bead breaker uses a long stroke and high force. Be careful not to damage or bend rim parts, such as the flange butt weld, when using the bead breaker.

1. Turn on the hydraulic pump to activate the bead breaker.
2. Apply enough hydraulic pressure to the bead breaker to push the flange about $\frac{1}{2}$ - $\frac{3}{4}$ inch [13-19 mm] from the lip of the bead seat band.
3. If the bead breaker moves and is no longer vertical, read just the ram adjusting screw. You must release pressure before adjusting the screw.
4. Continue applying hydraulic pressure until the flange is about $\frac{3}{4}$ - 1 inch [19-25 mm] from the lip of the bead seat band.
5. Place a nut or similar object between the flange and the lip of the bead seat band. (Fig. 4)
6. Release hydraulic pressure.

Continuing to Break the Tire Bead

1. Move the bead breaker away from the flange butt weld, 2-3 feet [0.5-1.0 m] from its present position.
2. Follow the steps in “Activating the Bead Breaker” above.
3. Continue advancing the bead breaker around the rim, 2-3 feet [0.5-1.0 m] at a time, breaking the tire bead.
4. Stop breaking the tire bead when you have moved the bead breaker about $\frac{3}{4}$ of the way around the rim. (Fig. 5)

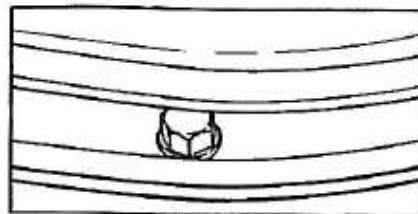


Figure 4

⚠ CAUTION

To prevent damage to the rim, do not use the bead breaker within 12 inches of the flange butt weld.

5. Apply enough pressure to the bead breaker to completely break the tire bead.
6. Release the hydraulic pressure.

NOTE: If you have gone all the way around the tire and the tire bead does not break: Repeat the steps in “Activating the Bead Breaker” and “Continuing to Break the Tire Bead” above, with more hydraulic pressure.

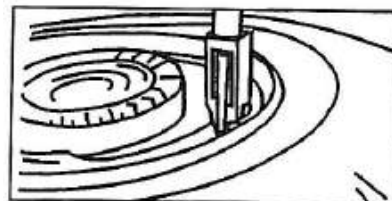


Figure 5



INSTRUCTION MANUAL

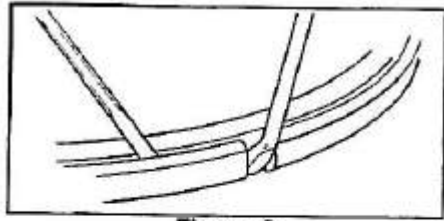


Figure 6

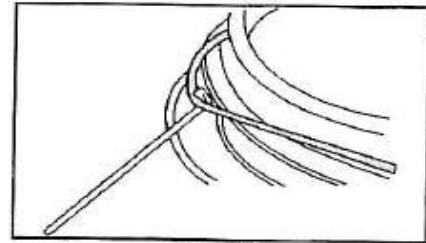


Figure 7

Removing the Lock Ring and O-Ring

1. Remove the lock ring with two pry bars. Start at the split in the ring and then work the tools around the ring (See Fig. 6)
2. Place a pry bar or screwdriver under the O-Ring and pull it out from the groove in the rim. Cut the O-Ring with a knife to ensure that a new O-Ring is used. (Fig. 7)

Removing the Bead Seat Band

1. Carefully lift the bead seat band off the rim. Use pry bars and the AME Intl. Flange Ring Puller Model 93000.
2. Carefully remove the flange from this side of the tire.

Breaking the Bead on the Other Side

1. When the wheel is on the vehicle, use the bead breaker to break the back tire bead, following the same procedure used on the front tire bead. If the wheel is on the vehicle, you may need to use a smaller ram, such as an AME Intl. 13060, between the frame of the vehicle and the back flange (See Figure 8) Repeat the steps in **"USING THE 11000 OR 11050 BEAD BREAKERS"** on pages 2 and 3.
2. If the tire is still on the vehicle: Remove the tire using a boom truck and tire sling (AME Intl. Model 91000). Remove the back flange to the complete the disassembly.
3. Remove the rear rim flange from the rim.

MOUNTING AND INFLATION

Jacking Up the Vehicle

1. Chock the wheels opposite the jack.
2. Jack up the vehicle.
3. Crib the vehicle with safety stands or blocking devices after jacking it up. Do not work under an unblocked load.

DANGER

Failure to chock the wheels and crib the vehicle can result in serious injury or death.



INSTRUCTION MANUAL

Inspecting the Tire and Rim

DANGER

Always replace damaged or badly worn tires. When replacing tires, always use a replacement of exactly the same diameter. Destroy old tires, so that they cannot be used. Using badly worn or damaged tires can result in serious injury or death.

1. Inspect all rim parts for damage.

DANGER

Always replace rim parts that are bent, badly rusted, pitted from corrosion, cracked, worn, or damaged. Destroy old rim parts, so they cannot be used. Using damaged rim parts can result in serious injury or death.

Do not mix parts from one rim with parts from another rim. Always use replacement parts that You can positively identify as the CORRECT replacement parts. All replacement rim parts MUST match the replacement part numbers stamped on the rim parts, Rims with different part numbers cannot be interchanged. If in doubt about sizing, DO NOT reassemble the rim. Contact the rim manufacturer for more information.

2. Replace damaged Parts

DANGER

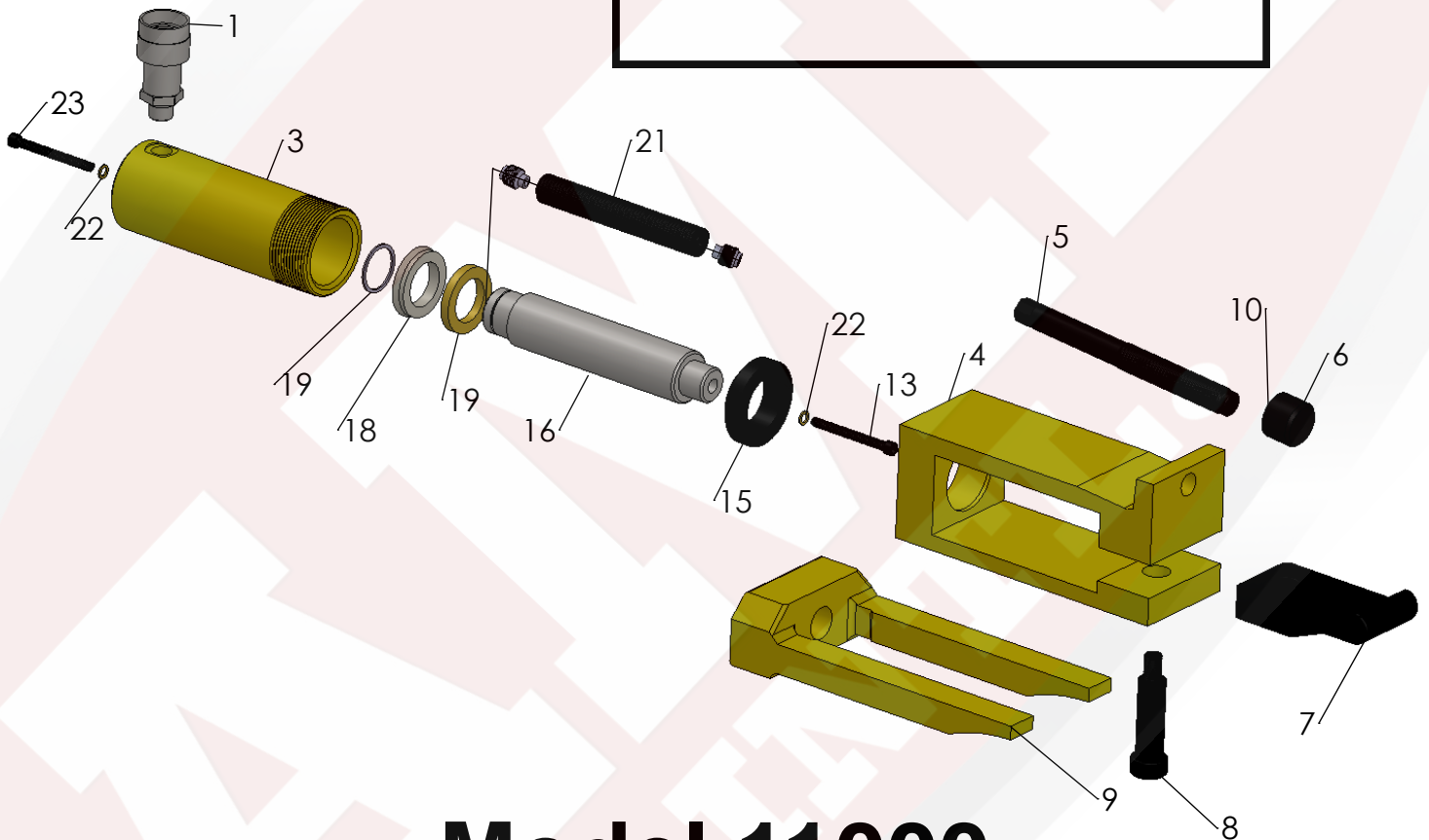
Never weld on an inflated or partially inflated tire/rim assembly. Welding on an inflated tire/rim assembly can cause an explosion and serious injury or death.

Do not rework, weld, heat or braze any rim parts for any reason. Reworking and welding damaged parts can result in serious injury or death.

3. Clean and repaint rim parts as necessary.
NOTE: Remove rust, dirt and foreign material from rim parts. Repainting the rim parts and bare metal areas will make them last longer. Be careful to keep paint out of the lock ring groove in the gutter when repainting rim parts.
4. Visually inspect all tire and rim parts to make sure they are positioned properly.



PARTS BREAKDOWN



Model 11000

OTR Giant Tire Bead Breaker

2347 Circuit Way, Brooksville, Florida, USA 34604
Phone: (+1) 352-799-1111 Toll Phone: (+1) 877-775-4AME (4263)
Fax: (+1) 352-799-1112 E-mail: sales@ameintl.net www.ameintl.net



PARTS BREAKDOWN

BEAD BREAKER

Max. Capacity: 13.8 Ton At 10,000 PSI

ITEM	PART	STOCK	NO.	
NO	NO.	NO.	DESCRIP- TION	DESCRIPTION
1	16060	10606	1	Ram Half Coupler with Dust Cap
2	11000-002	45054YE3	1	Replacement Cylinder (see page 2)
3	11000-003	260154	1	Decal
4	11000-004	58448YE3	1	Frame
5	11000-005	34184	1	Set Screw
6	11000-006	28705	1	Pressure Nut
7	11000-007	36958	1	Hook
8	11000-008	22469	1	Set Screw (3/4 dia. X 2 - 1/4 Lg.; Torque to 40/60 ft. lbs.
9	11000-009	58449YE3	1	Clevis
10	11000-010	DA11816049	1	Retaining Ring



PARTS BREAKDOWN

Parts List For Tire Bead Breaker

Model 11000

REPLACEMENT CYLINDER

ITEM	PART NO	STOCK NO.	NO.	
NO	NO	NO.	REQ'D	DESCRIPTION
11	11000-011	11127	1	Fitting Plug (3/8 NPTF)
12	11000-012	44857	1	Body, Cylinder
13	11000-013	10020	1	Soc. Hd. Cap Screw (1/4-20 x 1 -1/4)
14	11000-014	201429	1	Wiper
15	11000-015	351115	1	Guide, Rod
16	11000-016	421142	1	Rod, Piston
17	11000-017	207798	1	Bearing, Piston
18	11000-018	207796	1	U Cup
19	11000-019	207797	1	Retainer, Clip
20	11000-020	13654	1	Ring, Retainer (External)
21	11000-021	202625	1	Spring (.83 OD x 5.00 x 13 WS)
22	11000-022	10442	2	Washer, Copper (.37 x .25)
23	11000-023	16064	1	Soc. Hd. Cap Screw (1/4-20 x 3 -1/2)